



Congregation Temple Israel

DATE *Line*

January 2011
Tevet/Shevat 5771

Volume XXXI / Number 4
www.ti-stl.org

YOU'RE INVITED!

124TH ANNUAL MEETING OF CONGREGATION TEMPLE ISRAEL

Friday, January 14, 2011

6:00 p.m. Shabbat Service * 7:00 p.m. Dinner * 8:00 p.m. Meeting

Dinner reservations: \$25 per person (must be received by Jan. 7)
No charge to attend the meeting only

Election of new Board Officers and Trustees * Presidents' Report * Award Presentations
Honoring Our Retiring President * Tribute to Shofar Society Members

Officers Nominated for Election

JoAnne Levy - President
Jonathan Bloom - Vice President of Membership
David Chassin - Vice President of Facilities
Pamela Dern - Vice President of Social Action
Harvey Harris - Vice President of Community Outreach
Michael Weiss - Vice President of Strategic Planning
Carol Cohen - Secretary
Dee Mogerman - Assistant Secretary
Cathy Goldsticker - Treasurer
Diana Rothbarth - Assistant Treasurer

Trustees

Nominated for a first, three-year term

Ellen Brin, Burt Garland, Jr., Yale Hollander, Dr. Barbra Horn, Larry Linkon, Rob Litz, Dr. Mitchell Platin

Nominated for a second, three-year term

Thelma Davidson, Rob Epstein, Marcie Kalina, Jeremy Shook, Arnold Spirtas

Nominated for a first, two-year term

Ronald Chatmon, Dorette Goldberg, David Victor

Nominated for Lifetime Membership

Jack Deutsch and Dr. David L. Weinstein

Congregation Temple Israel is a caring, inclusive community committed to living Reform Judaism and participating in the sacred destiny of the Jewish people and Israel through education, worship, and repair of the world.

WORSHIP SCHEDULE

Friday, January 7, 2011

6:00 p.m. TOT Shabbat

7:30 p.m. TIFTY Shabbat

Saturday, January 8, 2011

11:00 a.m. Shabbat Service

Torah Portion: Exodus 12:29-39

Haftarah: Jeremiah 46:13-16

Friday, January 14, 2011

6:00 p.m. Shabbat B'Shir

Saturday, January 15, 2011

11:00 a.m. Shabbat Service

Bar Mitzvah of Alexander Smoller

son of Aaron and Kellie Smoller

Torah Portion: Exodus 15:11-21

Haftarah: Judges 4:4-9

Friday, January 21, 2011

7:30 p.m. Shabbat Service

Saturday, January 22, 2011

11:00 a.m. Shabbat Service

Torah Portion: Exodus 18:13-23

Haftarah: Isaiah 6:1-5

Friday, January 28, 2011

7:30 p.m. Shabbat Service

Saturday, January 29, 2011

11:00 a.m. Shabbat Service

Bat Mitzvah of Emily Smotkin

daughter of

Howard and Barbara Smotkin

Torah Portion: Exodus 23:1-9

Haftarah: Jeremiah 34:8-11



TRY OUT A NEW FRIDAY SHABBAT WORSHIP TIME

As a progressive Reform congregation, we are always looking for new and innovative ways to enhance our worship together and to engage more of our congregants. One area we are looking at is our Friday night Shabbat worship. We know that our current 7:30 p.m. worship time is difficult for families with young children, those who have difficulty driving after dark, and working adults trying to squeeze in dinner prior to services.

With this in mind, our congregation's Worship Experience Committee, under the leadership of Chairwoman Amy Cohen, is exploring the feasibility of changing our service time. As an experiment, starting Feb. 4 and continuing through April 29, all Friday night services will begin at 6:30 p.m. We will gather outside the May Chapel beginning at 6 p.m. for Shabbat candle-lighting and schmoozing as we enjoy wine and light appetizers. We will also have coffee, tea and cookies immediately following services. Our hope is that the earlier starting time will make it easier for families to get to services. We will continue to offer complimentary childcare for all services with no reservations required. We will also continue to hold a separate Tot Shabbat service for families with young children at 6 p.m. on the first Friday of every month.

With services ending at 7:30 p.m., families will have time to enjoy Shabbat dinner after the service, if desired. Also, on the fourth Friday each month, we will be organizing communal Shabbat dinners both at the Temple and around the community.

At the conclusion of this trial period, our Worship Experience Committee will evaluate this experiment and make a determination as to whether to make the time change permanent. We look forward to seeing you at Shabbat services and getting your feedback on the earlier start time. If you have any questions, please contact Rabbi Feder, afeder@ti-stl.org or 314-432-8050.

UPCOMING EVENT



Baseball in January!!
Bill DeWitt III



President of the St. Louis Cardinals
is Coming to Temple Israel!!

Sunday, January 23, 2011

6:00 p.m. Baseball themed Dinner (Hot dogs, beer, soft drinks,
Gus' Pretzels, and Ted Drewes)

7:00 p.m. Mr. DeWitt will speak

"Cardinals: A Partner in the St. Louis Community"

(Get the inside scoop on what's new with the Cardinals both on and off the field!!)



Name _____ Phone # _____

Yes! We'll be at TI's "Baseball in January" event!

____ # Adults attending dinner at \$12.00 per person

____ # Adults attending the speaking event only at 7:00. (no charge)

Total enclosed: _____

This event is sponsored by the Adult Education Committee of Temple Israel.

Questions? Call the TI Education Center at 432-8077.

Please return to the TI Education Center by Tuesday, January 18th.

Checks payable to Temple Israel

STEPHANIE RHEA NAMED YOUNG FAMILIES CONSULTANT

This past summer, the Board of Trustees of Temple Israel came together to set goals and a vision for our congregation as we move into the future. A top priority was determined to be engaging and reaching out to young families. In order to respond to this goal, a Young Families Consultant position at the Temple has been underwritten through May of this year. Among other things, the Young Families Consultant has been charged with the goals of analyzing our current programming to make it more accessible and appealing to families with young children, creating new programs for this age group, and building a database of current and potential members within this demographic group.

We are proud to announce that Stephanie Rhea will be filling this important role for us. Stephanie is herself a TI member with young children, and she holds part-time positions in our Deutsch Early Childhood Center, Religious School, Hebrew School, and Club 56 youth group. She has also been an active volunteer with the Temple, serving as a co-chair of the Debbie Friedman Installation Weekend. We are so thrilled to have her on board. Her energy and enthusiasm for this task are absolutely contagious!

Have you...Have you...

Changed your Home or Work telephone number or
Your cell phone number?

Changed your mailing address or Email address?

Please help us keep our
Temple Israel records current.

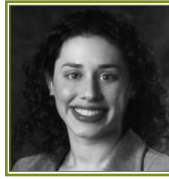
Call us at 314-432-8050 or

E-mail us at write us @ti-stl.org



IF NOT NOW, WHEN?

Rabbi Amy Feder



We have all heard the statistics. The Jewish population is in decline, and the combination of an aging population and disinterested youth spells trouble for our community.

We have all tried to respond. Congregations and Jewish organizations have shifted our focus to engaging youth and young adults and reaching out to the next generation in different ways to build hope for the future.

This response is necessary and exciting and hopefully, we will see returns on our investments in the years to come with the creation of new, engaged and excited young families.

Yet in the meantime, we have created an imbalance in our communal priorities, moving much needed resources away from that large portion of our population who needs them most - older adults. How can we, as a congregation, continue to quest after young potential members while still creating meaningful pathways to learning, spirituality and healing for those who are beyond midlife?

Rabbi Dayle Friedman, the director of Hiddur: The Center for Aging, suggests that part of our problem is based in a paradigm that comes straight from the Torah. In the Fifth Commandment we are taught to honor our parents, essentially to serve our elders through care and support. Yet those in life's third chapter may need something far different and complex than our ancestors imagined. Aging populations are not monolithic. Both the age span

that defines the group labeled as older adults and the range of abilities, interests and involvement of those in this group are wider than anyone knows how to handle. While honoring and caring for our elders is still part of our obligation and privilege, we also need to think beyond support and focus on engagement.

At Temple Israel, we are trying to do this in several ways. We have partnered with two programs run by the Jewish Federation, ElderLink and the NORC (Naturally Occurring Retirement Community), hosting them to provide quality programming within TI's walls. We have also tried to think beyond generational silos, creating intergenerational programming and worship to appeal to all generations. Yet a piece is still missing. We have yet to truly tap into the gifts of our older members, finding ways to showcase your skills, interests and abilities.

Some of you have stepped forward to share your gifts, and our congregation is so much stronger for it. There is Walter Gusdorf, who built two magnificent new podiums for our sanctuary. There are Thelma and Marvin Davidson, who have served as the chairs of our Usher Corps for 18 years. There is Fred Cohen, who began offering lectures last year on global Jewish communities and is itching to teach more. The list goes on and on of people who have offered their skills and talents to enrich our congregation by using their own interests and passions, and we all end up benefiting in the end.

We know that engaging aging can bring vitality and new pathways of learning to our congregation. Together, we can build a vibrant Jewish future for people of all ages.

afeder@ti-stl.org

CHUTZPAH

Rabbi Michael Alper



As I'm writing this article, the forest fires that have already devastated a large part of the Carmel in northern Israel are still raging. The fire, centered in the northern mountains, is the worst in Israel's recorded history and has claimed at least 42 lives and destroyed much of the forest. By the time you read these words, God-willing, the fires will be under control, even extinguished. People around the world may have stepped up to help our Israeli friends and relatives in this terrible time of need. Yet even after the fires go out, this catastrophe remains as a reminder of just how different life in Israel is than we sometimes remember here in America. Israel simply did not have the firefighting capacity to combat the flames. And to lose trees in Israel, the desert that Theodore Herzl once only imagined might one day bloom, seems a biblically proportioned tragedy.

I know many of you have stepped up and donated to the Union for Reform Judaism, Jewish National Fund, and other organizations who are gathering funds to help Israel. This is a wonderful support and tribute, and it is one course of action that I hope many more will continue to pursue. One additional way that we can support Israel and even learn from this tragedy is to study and commemorate the holiday of Tu B'Shevat.

While we are all familiar with Rosh HaShanah, the "Head of the Year" that occurs in the Fall, there are actually four Rosh HaShanahs which were used by the sages to define the Hebrew calendar. Tu B'Shevat, the "New Year of the Trees," is observed on the 13th (*tu*) of the Hebrew month of Shevat, which falls in January of this year.

Scholars believe that Tu B'Shevat was originally an agricultural festival, marking the emergence of spring.

After the destruction of the Great Temple the holiday emerged as a way for Jews to symbolically bind themselves to their former homeland by eating foods that could be found in Israel and by tithing. By the 16th and 17th century, Kabbalists created a ritual seder for Tu B'Shevat similar to the Passover meal. Today, Tu B'Shevat has become a tree planting festival in Israel in which both Israelis and Jews around the world plant trees in honor or in memory of a loved one or friend.

Today, as you read this, there may be snow piling up on the ground. It is not possible for us to perform the same rituals as our brothers and sisters in the Land of Israel, yet the meaning of Tu B'Shevat continues to find new life in our community. Today, we mark the holiday as a day of environmental awareness. Air pollution, soil pollution, water pollution and even noise pollution are all prohibited by the rabbis. For Jews, the environmental crises we face today are a religious challenge. We must acknowledge our God-given responsibility to blot out the environmental degradation we see around us and commit to planting, building and sewing the seeds of spiritual *and environmental renewal*. Shanah Tovah!

malper@ti-stl.org

TEMPLE ISRAEL MOVING FORWARD

As most of you have heard or read by now, “after much deliberation and for a variety of reasons, Temple Israel and United Hebrew Congregation have mutually and amicably agreed to end discussions at this time concerning any potential merger between our two congregations. We remain open to continued conversation regarding collaboration with United Hebrew, as well as with other congregations and organizations” in our St. Louis Jewish community.

While embarking on this process has been challenging, it has also been beneficial for our congregation. The two open congregational meetings we conducted were well attended and generated much valuable input and feedback and a number of excellent ideas. We extend our sincere thanks to the more than 200 congregants who participated in these sessions.

As a result of the valuable feedback we received from congregants, we have established an Alternative Options Task Force. Leonard Adreon, a past president of our congregation, is chairing this task force, which is charged with recommending a viable long-term plan for our congregation’s facilities. The committee is comprised of the following congregants, many of whom have professional expertise in real estate development and architecture: David Chassin, Gary Feder, Gary Follman, Dr. Jerry Levy, David Rosenberg and Steve Wolff.

The clear message we took away from our congregational meeting is that “people seem flexible and open to new ideas and are eager to know what kind of potential there is to renovate, rebuild, or generally just think out of the box about what kind of physical space our current needs

demand,” explained Rabbi Feder. “We are ready to take an honest look at who we are as a congregation today and what kind of priorities we have for the future and then rethink our options accordingly.”

The committee will work in consultation with our Rabbis and Temple leadership. They have already made substantial progress towards their goal of making a formal recommendation to the Temple’s Board of Trustees no later than June 2011.

JEWISH SOCIAL ACTION NETWORK (JSAN) TO SPONSOR VOLUNTEER DAY

Join with St. Louis area JSAN congregations to help get the new teen and young adult resale shop, “ReFresh,” up and running. On Sunday, February 13, from 10:00 a.m.- 4:00 p.m., volunteers will work in shifts at the shop, located on Brentwood Blvd. across from Whole Foods. We will be sorting, processing, tagging, hanging and organizing the clothes in the shop, which opens officially in the spring of 2011. This will be a fun event for all ages. ReFresh is a project of the Foster and Adoptive Care Coalition and all proceeds from the new shop will benefit the work of the coalition.

The Foster and Adoptive Care Coalition is the area’s largest recruiter of foster/adoptive homes for children in need. In addition to recruiting foster and adoptive homes, the Coalition also offers many support services to foster and adoptive parents, including support groups, training, advocacy and newsletters.

For more information, contact Gail Wechsler at gwechsler@jrcrstl.org or 314-442-3894.

TODAH RABAH

TO OUR NOVEMBER USHERS:

Rachel Andreasson, Tyler Andreasson, Jessica Billhymer, Linda Cherrick, Brent Comensky, Karen Comensky, the Gelfman Family, Marvin Goldfarb, the Levinson Family, the Mrazek Family, Harry O’Gorman, Sheri O’Gorman, Jonathan Waldman and Scott Waldman

TO OUR NOVEMBER B’NAI MITZVAH PRESENTERS:

Betty Bridge and Anita Kraus

TODAH RABAH:

Larry Alton, Pamela Dern, Nancy Hammerman, Harlan and Lea Levitt, Ben and Margo Manheimer and Lois Perryman for setting tables for our Thanksgiving dinner.

Joelle Biernacki, Amy Fenster Brown, Peggy Kornfein, Lois Perryman and Natalie Wolfman for helping to fold napkins for the Thanksgiving dinner.

Mark Brodsky and Margo and Ben Manheimer for helping with the Hanukah Appeal mailing.

Judy Jacks, Bruce Morosohk and Jill Silverstein for driving on our 9th grade field trip.

A BIG THANK YOU

WALTER GUSDORF AND RON CHATMON

The rabbis prefer to stand at opposite sides at the front of the *bimah* when we are worshipping in the Gall Family Sanctuary. Unfortunately, we have only one forward pulpit podium. We were seeking a solution when to our rescue came Walter Gusdorf. After reviewing the problem and speaking with our rabbis, Walter constructed two, beautiful matching podiums for the front of the sanctuary *bimah*. His detailed approach gave the pulpit functionality for the rabbis while also matching our *bimah*'s *decor*. Thanks to the additional expertise and efforts of Ron Chatmon, the new pulpit podiums were able to be fitted with our existing microphones, ensuring that our rabbis and B’nai Mitzvah students will be well heard when speaking from the sanctuary pulpit. A big and well deserved thank you goes out to Walter and Ron for their creative and tireless efforts on this project. The pulpits are a beautiful and wonderful addition to our worship space.

We thank all of our ushers and
Bar/Bar Mitzvah presenters
for their dedication in 2010
and wish them and their families a
happy, healthy and blessed 2011.

With much love,

Thelma and Marvin Davidson

Usher Co-Chairs

DEUTSCH EARLY CHILDHOOD CENTER OF TEMPLE ISRAEL

Leslie Wolf, Director

Happy New Year! 2011 is going to be a great year at the Deutsch Early Childhood Center. We are starting off the new semester with 103 children. Who can believe that just a year ago we had 43 students? We have added a new Froggie 2-year-old class that started this month to keep up with the demand to be at DECC. It is all so exciting!

As you can tell, the buzz about our quality preschool program is everywhere. I need to give credit where it is due. We are experiencing this phenomenal growth and success because we have such wonderful, loving, caring teachers at our school.

Our Pre-Kindergarten Lizard teachers, Karen Lucy and Jan Blumoff, make sure that all of our students are kindergarten ready! Then we have Diane Weiss and Sarah Reed teaching our 3-4-year-olds in the Dolphin classroom. Lauren Yates is working with both Lizards and Dolphins. Our 2-3-year-olds in the Bumblebee classroom are taught by Tanya Carter, Janie Spirtas, Sarah Bernstein, and Flo Shultz. Teaching our 2-year-olds are Jane Weinhaus, Lori Sheinbein, Debi Porfidio, Ivy Klein, Nancy Belau, and Amy Garriga. As a result of our growth, we recently added Julie Rosen and Becky Sherman to this group of talented teachers. Jeri Bogard and Lisa Cohen take care of our youngest students who attend Kids' Morning Out.

Our talented specialists enhance and strengthen our curriculum. Stephanie Rhea serves as our Hebrew/Judaics teacher and is also in charge of our nap room. Our students create masterpieces with art teacher Debbie Abrams, and learn Spanish from Debbie Kunitz. Our music program, as most are aware, is run by Dave Simon's KIDZROCK! These teachers do an amazing job in their classrooms



DECC students enjoy lunch in their new outdoor classroom.



DECC students celebrate Thanksgiving with feasts.

educating our young children and providing for their individual needs. Their energy is astounding and they are truly what make this school the wonderful preschool that it is. In the coming months, I will tell you more about our staff.

We just had our conference day at DECC. The one comment I heard over and over again is that parents feel such warmth every time they walk into our school. One parent just told me that every single teacher knows her child and every teacher treats him like he is the most important person who comes to this school. This is what sets DECC apart from rest of the preschools. It is the warm, loving feeling you get as soon as you enter our doors. Please come visit and see for yourself what all the excitement is about.

It's also time to remember that while it may be cold and blustery outside, summer camp enrollment is right around the corner. Shortly after the first of the year we will also be looking at school re-enrollment for 2011 - 2012 school year. As always, DECC is the place to be!

lwolf@ti-stl.org

TEMPLE ISRAEL EDUCATION CENTER

Deborah Morosohk R.J.E., Director of Education

As I write this, our Israeli guests from Congregation YOZMA are landing back in Tel Aviv. We said our goodbyes yesterday and it was so hard to let them go. Our celebration of Hanukah this year was so much richer because we shared it with our friends. It was the individuals and the relationships that made our encounter so profound.

Yehudit and Smadar sat in on Stacey Wilson's Alef Hebrew class and showed the students how they teach their students in Israel to remember the *tzayray* vowel. That class will always remember to make their smile with two fingers and say "AY!" Tzipi S. and Hava told our 4th graders about their 4th grade students at the YOZMA School. Our TI 4th graders wanted to know what kinds of pets they have and what Tzipi S. and Hava did when they served in the Israeli army.

Kevin Zeldin sent me this message after having Fanny, Sharona, and Tzipi W. to dinner in his home. "We enjoyed the evening with our three Israeli guests last night. We had a great conversation, lit candles, gave some presents and, most importantly, gave our girls an opportunity to get to know Israelis." Cary and Dee Mogerman had this to say about having Hava and Sharona as guests in their home for the week. "[We] can't even tell you how much fun this is. We are having a great time!"

Adele and Arthur Litz told me that they now feel that Tzipi is a daughter to them and they plan to visit her in Israel

next year. Danna Albright showed me a beautiful necklace given to her by Fanny, Naama, and Tzipi W. - a gift from her new Israeli sisters. Rabbi Nir Barkin shared that he now feels like part of the Wallis family after being with Adam, Emily, and their children for the week. And my guest, Nava, is now a special friend and colleague.

When we began the process of planning for this encounter seven months ago, our formal goals were:

1. To continue the Knesset Israel process by increasing Israel engagement at Temple Israel.
2. To extend the connection between Temple Israel and Congregation YOZMA that has been ongoing for more than two years.
3. To deepen the relationship between individuals at Temple Israel and individuals at the YOZMA Congregation and School. I think we can say that we have met and even exceeded our goals.

Thank you to the Jewish Federation of St. Louis for the targeted grant that made the travel of our friends possible. And, thank you to all of you who studied with Nava at our Saturday Bible Study, worshipped at our Shabbat morning service with Rabbi Barkin, danced with Yehudit at our Hanukah dinner, and who spent time connecting with all our guests.

dmorosohk@ti-stl.org

COMING UP IN ADULT EDUCATION

Sundays, January 16, 23, and 30 9:45 - 11:15 a.m.

"Unlocking the Mysteries of the Dead Sea Scrolls" presented by Rabbi Shook.

Tuesday, February 1 7:00 - 8:30 p.m.

"Jewish Resistance in the Holocaust" presented by Bob Schnurman.

JANUARY 2011

SUN MON TUES WED THU FRI SAT

For the most up-to-date news on TI programs and events,
 subscribe to our weekly e-newsletter, connectIons. E-mail
 mkrinsky@ti-stl.org

1
 New Year's Day

 11 am
 Shabbat Service

2

3
 10 am
 Sisterhood Meeting

4
 7:30 pm
 Scout Troop 11
 Meeting

5
 DECC Classes
 Resume

 9 am
 Opera Lecture
 Class

6
 12:30 pm
 Rabbi's Roundtable

7
 6 pm
 TOT Shabbat

 7:30 pm
 TIFTY Shabbat
 Service

8
 9:45 am
 Bible Study

 11 am
 Shabbat Service

9
 1 pm
 TIFTY Board Meeting

 3 pm
 Israeli House

 6:30 pm
 Cotillion

10
 8:30 am
 DECC Dad's Breakfast

 9:30 am
 Symmphony Lecture

 7:30 pm
 Scout Troop 11 Meeting

11
 7:30 pm
 Scout Troop 11
 Meeting

12
 9:30 am
 Study Group

13

14
 7:30 pm
 Shabbat B'Shir
 Service and Oneg

15
 9:45 am
 Bible Study

 11 am
 Shabbat Service
 Alex Smoller
 Bar Mitzvah

16
 9:45 am
 Adult Education

 1:00 pm
 TIFTY Meeting

 3 pm and 4:30 pm
 Israeli House

 6 pm
 Cotillion

17
 Martin Luther King
 Day - Building Closed

 6:30 pm
 Confluence of Faith

18
 7:30 pm
 Scout Troop 11
 Meeting

 7:30 pm
 Youth Education
 Meeting

19

20
 Tu B'Shevat

21
 7:30 pm
 Shabbat Service

22
 9:45 am
 Bible Study

 11 am
 Shabbat Service

 Family Movie Night

23
 9:45 am
 Adult Education

 11:30 am
 JYG Pump-It Up
 Program

 6 pm
 Bill DeWitt III Event

24
 9:15 am
 DECC Parents
 Committee

25
 7 pm
 Youth Activities
 Meeting

 7:30 pm
 Scout Troop 11

26

27

28
 7:30 pm
 Shabbat Service
 with HaShemesh

29
 9:45 am
 Bible Study

 11 am
 Shabbat Service
 Emily Smotkin
 Bat Mitzvah

30
 9:45 am
 Adult Education

 1 pm
 TIFTY Board Meeting

 2:30 pm College Fair

 6 pm Cotillion

31

RELIGIOUS SCHOOL *calendar*

January 2
NO SCHOOL

January 4
NO SCHOOL

January 9
Religious School
6th Grade B'yachad
Academy Electives
Hebrew School
Pre-Conf/Conf. Electives

January 11
Hebrew School

January 16
Religious School
6th Grade B'yachad
Academy Electives
Hebrew School
Pre-Conf/Conf. Electives

January 18
Hebrew School

January 23
Religious School
6th Grade B'yachad
Academy Electives
Hebrew School
Pre-Conf/Conf. Electives

January 25
Hebrew School
Bet Class Tu B'Shevat
Seder

January 30
Religious School
1st Grade B'yachad
Academy Electives
Hebrew School
Pre-Conf/Conf. Electives

CONGREGATION YOZMA

Our Israeli Guests from Congregation YOZMA had a fabulous time here at Temple Israel. Thank you to all our great TI volunteers who made them feel so welcome!

Host Families:

Larry and Liz Linkon
Adele and Arthur Litz
Rob Litz
Cary and Dee Mogerman
Debbie and Bruce Morosohk
Ron and Darcy Scharff
Adam and Emily Wallis

Meal Hosts:

Rachel and Tom Andreasson
Evie and Marvin Bernstein
Paul and Carol Gusdorf
Rabbi Mark and Carol Shook
Kevin and Janine Zeldin

Drivers:

Danna Albright
Fred and Vera Cohen
Jennifer Culp
Pamela Dern
Carolyn Foster
Caryn Sandweiss
Audrey Shanfeld
Jeffrey Wilson

Tour Guide:

Linda Koenig

Donors:

Evie and Marvin Bernstein
Earl and Esther Kessler
Rob Litz
Cary and Dee Mogerman
Audrey Shanfeld
Michael and Michele Steinberg

THANK YOU! THANK YOU!

An enormous thank you goes out to all of the volunteers who made our 24th annual Thanksgiving Dinner another wonderful success. More than 360 people in need enjoyed a delicious holiday dinner with entertainment. This would not have been possible without the gift of our generous benefactor and our volunteers. From the turkey carvers, to the table setters, to the registration table, to the servers, to the cooks, to the hosts and hostesses, to the Scouts, to the Mitzvah Mania students, to the staff, and to our outstanding Rabbis, all combined and made this another warm, memorable event. All are due a thank you for the time and energy they provided to make our Thanksgiving Dinner for persons in need a success, yet it all started with the hard work, preparation, and attention to detail of the our co-chairs, Sarah and Ron Falkoff. Thank you, Sarah and Ron!



Our visitors from Congregation YOZMA

TIFTY AND JYG

TEMPLE ISRAEL FEDERATION OF TEMPLE YOUTH JUNIOR YOUTH GROUP TEMPLE ISRAEL

We invite the entire congregation to join us for TIFTY Shabbat on Friday, January 7, at 7:30 p.m. Our talented youth groupers will lead us in a creative worship service on the theme of God.

At the end of the month, on Saturday, January 29, we are going to have an all-TI youth group extravaganza! All TIFTY and JYG members will enjoy yummy Chinese food from Panda Express, Israeli dancing, and tie-dying! Everyone will get a shirt to take home, and then we'll make extras to sell to raise money for Camp Rainbow, a summer camp for kids with cancer. Watch your inbox or mailbox for a flyer, and plan to join us and bring all your TIFTY and JYG friends! Or, visit www.tifty.org for a flyer!

Questions? Contact your friendly TIFTY and JYG advisors, Debbie, advisors@tifty.org; Jennifer, jennifr319@yahoo.com.

CLUB 56

5TH AND 6TH GRADE YOUTH GROUP

Happy 2011 from all of us at Club 56!

Club 56, Temple Israel's youth group for grades 5-6, has exciting adventures planned for January and beyond. Save the date of Feb. 26 for our Step-Up Program. Fourth graders will be invited to come try out Club 56, and 6th graders will get to see what Junior Youth Group (JYG) is like. You won't want to miss the special event we have planned!

Parents of 5th and 6th graders, make sure that you and your child are on our Club 56 e-mail list to keep up-to-date on all of our activities. Contact Club 56 Advisor Stephanie Rhea at club56@ti-stl.org.

POKER NIGHT!!



Saturday, Feb. 12
7 - 9:30 p.m.
at Temple Israel

Please join TIFTY for an evening of fun as we raise funds for Camp Rainbow, a local summer camp for kids with cancer.

Poker and blackjack for all

Special kids tables for the little ones.

Raffles! Prizes for winners!

Snacks and soda provided.

(Adults 21 and older can bring their own beverages.)

Cost: \$18 for 13 and older; \$5 for 12 and younger.

Extra chips will be available for purchase.

RSVPs appreciated:

314-432-8050, ext 239,
advisors@tifty.org.



WINTER FAMILY MOVIE NIGHT

Our Temple Israel family movie night last summer was such a hit that we're planning another one for this winter! Mark your calendars now and plan to join us on Saturday night, Jan. 22, for movies, refreshments and fun for the whole family. For more information, contact Stephanie Rhea, srhea@ti-stl.org or 314-432-8050.

YOUNG FAMILY CHAVUROT

Members of two of our Young Family Chavurot (Chavurah Shaish and Chavurah Super Sharks) got together with other Temple members to serve dinner at the Ronald McDonald House for one night of Hanukah. Everyone enjoyed giving back to the community and all the families staying there loved the latkes and other delicious foods we brought.

If this volunteer opportunity sounds like something for you, please contact Stephanie Rhea. We are planning a barbecue themed night for the families at the West County Ronald McDonald House in February.

Stephanie Rhea
srhea@ti-stl.org



Pictured at the Ronald McDonald House: Bridgette Switzer, Anna Clark, Natalie and Jillian Wolfman, Charlotte, Jackie, Michael, and Charlotte D'Alfonzo, Evie Bernstein, Cathy and Danielle Goldberg, Missy Parker, Stephanie Rhea, Geoff, Liz and Maya Kruvand.

If you are interested in helping to plan this year's adult Purim Tisch on Saturday night, March 19, please contact Stephanie Rhea, srhea@ti-stl.org.

Don't know what a Tisch is? Save the date and find out!

TEMPLE ISRAEL SISTERHOOD

We all enjoyed our Sisterhood Hanukah celebration as we ate lunch, played dreidel and watched the candles burning on the Hanukah menorah. A good time was had by all.

A special thank you goes to Jane Gold for finishing up the labeling and packaging of the Hanukah candles that were distributed to our school-age children at Temple Israel.

Our Sisterhood Gift Shop will be running "specials" in the New Year. The gift shop is a great source for gifts for a Bar/Bat Mitzvah, wedding, birthday, anniversary or any special occasion. Gift shop hours are Monday, 9 a.m.-noon; Tuesday, 10 a.m.-2 p.m.; Thursday and Friday, 10 a.m.-noon, and Sunday, 9:30 a.m.-noon when religious school is in session. The gift shop is closed on Wednesdays.

Our next Sisterhood meeting will take place Monday, Jan. 3, 2011 at 10 a.m.

Best wishes for a happy, healthy and good New Year.

Susan Stiefel, Sisterhood President



Sisterhood Hanukah Luncheon. Back row: Susan Stiefel, Jan Nykin, Hildegard Rochman. Front row: Jane Gold, Rabbi Amy Feder.

Tributes received as of December 10.

BERNADINE S. SILVERMAN SENIOR CITIZEN'S FUND

In memory of Dr. R. Scott Berger

Sunny and Jarrett Silverman

DEUTSCH EARLY CHILDHOOD CENTER FUND

In memory of Delores Glazer

Joan, Jamie and Steve Gold

In honor of Davd Weinstein's outstanding service as Temple Israel President

Ellen and Jack Deutsch

In honor of Leslie Wolf's special birthday

Carol, Ed, Ellie and Andy Cohen

Debbie and Bruce Morosohk

ENDOWMENT FUND

In memory of Sandra Sue Breadman

Audrey and Leonard Adreon

Pat And Larry Block

Mary Beth and Allen Soffer and Family

Elizabeth M. Stohr

In memory of Justine Eiseman

Susan and Paul Goldberg

In memory of Bernard Gerchen

Liz and Larry Linkon

Diana and Jim Rothbarth

In memory of Mark Hendin

Frala and Aaron Osherow

In memory of Albert Prel

Debbie and Tab Cohen

Kathleen M. Nee

Peggy Oungst

FRIEDA & LESTER HANDELMAN

EARLY CHILDHOOD ART FUND

In honor of a speedy recovery of Jeanne Pass

Natalie and Neil Handelman

GENERAL FUND

In memory of Sandra Sue Breadman

Jody and David Chassin

Carol, Ed, Ellie and Andy Cohen

Janet Dillon

Joyce and Gary Follman

Elaine Goldenberg and Wendy Mussy and Family

Gale and Harry Hilburg

Marilyn Krinsky

Liz and Larry Linkon

Rabbi Mark and Carol Shook

Elinor and Robert Slosberg

Karen and David Smoller

JoAnn Stephan

GIVE-A-MEAL-A-MONTH FUND

In memory of:

Marvin Brasch

Al Prel

Joe Rosenbaum

Leo Waniewski

Hildegard and Herman Rochman

In honor of a speedy recovery of:

Lynn Cole

Marvin Davidson

Clarence Rochman

Moisey Samoylovich

Elizabeth Schweizer

Hildegard and Herman Rochman

In honor of the Give-A-Meal-A Month Program

Jan Nykin

HERMAN & ERNA DEUTSCH

STUDENT RESOURCE CENTER FUND

In memory of Sandy Breadman

Debbie and Bruce Morosohk

JOHN & ANNA LEE BROWN SCHOLARSHIP FUND

In memory of Sandy Breadman

Joanne and Dan Schwartz

KIRK NACKMAN GARDEN FUND

In memory of Don Ross

Joan and Les Nackman

LYNNE & ARNIE COLE URJ CAMP SCHOLARSHIP FUND

In honor of Hildegard Rochman

Dorothy Maer

MILLARD S. COHEN CARING COMMUNITY FUND

In memory of Ellis and Roslyn Littmann

Myra L. Cohen

NATHAN KAHN - ERNESTINE KAHN -

CHARLES KAHN FOUNDATION

In memory of Sandy Breadman

Thelma and Marvin Davidson

Linda and Jerry Kraus

In memory of Bernard Gerchen

Cathy and Randy Arst

In memory of Marian Huber

Thelma and Marvin Davidson

RABBI'S DISCRETIONARY FUND

In memory of Ronny Feldman

Betty Feldman

In memory of Bernard Gerchen

Gary Gerchen

Grace Sarner

In memory of Sally Greenblatt

Albert, Paul and Charles Greenblatt

january TRIBUTES

In memory of Marlene Kopman

Jerome Kopman

In memory of Lester Nathan

Bobette Nathan

In memory of Albert Prel

Mark Prel

In honor of Rabbi Feder and Rabbi Alper's installation

Sheilah and David Geddes

Susan and Stanley Goodman

Linda and Steve Wielansky

In honor of the marriage of Julie Follman to Rich Wooten

Joyce and Gary Follman

In honor of the wedding of Erin Hubert

Marilyn Hubert

In honor of the naming of Brody Spielberg

Renee and Ron Beck

Elaine and Skip Spielberg

In appreciation of Rabbi Feder

Jacqui and Aaron Fadem

In honor of the the 50th Wedding Anniversary of Sarijane and Michael Freiman

Betty Feldman

In honor of the Bar Mitzvah of Andrew Gelfman

Salley and Steve Gelfman

In honor of the Bat Mitzvah of Jamie Goldberg

Elise and Daniel Goldberg

In honor of the Bar Mitzvah of Ryan Mrazek

Shelly and Larry Mrazek

YAHARZEIT FUND

In memory of Jack Ansehl

Suzanne Lasky

In memory of Ann Lawton Arenberg

Paul Arenberg

In memory of Ida Arkin

Harriette and Lloyd Arkin

In memory of Beatrice Berger

Benjamin Sandler

In memory of Hannah Bly

Elaine and Eric Bly

In memory of Nancy D. Bry

Terry Bry

In memory of Mollie Gelb Davis

Marjorie and Ronald Fenster

In memory of Siegfried Elkan

Mae Elkan

In memory of Lillian Fox

Audrey Shanfeld

In memory of Sadie Greenblatt

Sheryn and Arthur Silverman

In memory of Sally Greenblatt

Albert Greenblatt

In memory of Mary Hyman

Alvin Hyman

In memory of Gertrude Kessler

Earl Kessler

In memory of Lydia Kolodny

Carol Winston

In memory of Anne Helman Levinson

Michael M. Levinson

The Edward Levinson Family

In memory of Helen G. Mitchell

Steve Mitchell

In memory of Norman Nachman

Leslie Nackman

In memory of John Patrick O'Gorman

Sheri and Sean O'Gorman

In memory of Boris Oris

Maya Samoylovich

In memory of Bart Phillips

Shirley Phillips

In memory of Irvin Rainey

Jeanne Ferman

In memory of Dora Rothstein

Marcos, Cathy, Eliza and Dena Rothstein

In memory of Leonard and Sara Seidel

Avery Seidel

In memory of Tillie Seigal

Heather Cohen Padratzick

In memory of Loretta Silvermintz

Sheryn and Arthur Silverman

In memory of Jewel Simon

LaVerne and Stanley Farbstein

In memory of Isador Singer

Barbara and Edward Weiss

In memory of Gussie Abramson Spirtas

Arnold Spirtas

In memory of Lawrence Zweig

Ruth Zweig

JEWISH FOOD PANTRY BIMAH BASKETS

December 17-18: In honor of Shane Kreinberg's Bar Mitzvah

Donna Wilkerson Light and Olivia Light

ONEG

December 10-11: In honor of Ryan Mrazek's Bar Mitzvah

Love, Matthew, Olivia, and Mom and Dad-Shelly and Larry Mrazek

December 17-18: In honor of Shane Kreinberg's Bar Mitzvah

With love, Jeff and Nancy Kreinberg

GIVE-A-MEAL-A-MONTH JANUARY

For the month of January the Harvey Kornblum Jewish Food Pantry is looking for these specific items in order to provide well-balanced nourishment for the community in need:

**Peanut Butter & Jelly, Canned Fruit,
Canned Pasta with Meat,
Canned Tuna Fish, Canned Hearty Soups,
Healthy Snacks, Personal Care Items (shampoo,
toothpaste, soap and baby diapers - all sizes)**

Items should be brought to our collection-site located by the May Chapel.

For further information, please contact Louise Levine, (636) 227-1259.



David Chassin, Jill Starr and Josh Packman serving at our Annual Thanksgiving Dinner

CONDOLENCES

The congregation extends our deepest sympathy to the families of:

Marvin Zidel Brasch	Albert Prel
Sandra Sue "Sandy" Breadman	Dr. Leo Sachar
Harvey Friedman	Lee Schwartz
Fay Handshear	Jack Jacob Shuman
Marion Huber	

PERPETUAL MEMORIAL

A new memorial has been established for:
VJ Mancuso

WHAT'S NEW AT NEW MT. SINAI?

We're starting 2011 off with a new and exciting plan. When members of our owner congregations purchase property at New Mt. Sinai Cemetery, a donation will be made to their temple. The donation can be as much as 10 percent, so you can make a good decision for yourself and help Temple Israel as well. Remember, New Mt. Sinai has been Temple Israel's cemetery for more than 124 years, and many of our members and their families have chosen New Mt. Sinai to be their eternal resting place. There is no better time than now to make an appointment to come out and look at the beauty and history that is New Mt. Sinai Cemetery. For more information, call our office, 314-504-3302, or go to our website:

www.newmtsinaicemetery.org

We look forward to hearing from you.

Dan Brodsky
New Mt. Sinai Cemetery

JANUARY 2-8

Otto Josef Baer
Ilse E. Bamberger
Sigmund J. Barack
Libby Galst Bass
Leon M. Bodenheimer
Harry Brandt
Ann Cooper
Hermann Deutsch
Dr. Max Fendler
Irma R. Frankenstein
Adolph Fremder
Philip R. Fuchs
Rose Cutter Gelber
Louis Glazer
Sarah Esther Goldberg
Selma Hollander
Carl Katz
Herman Kohlenbrener
Bernice L. Kohner
Alex Landau
Julius Levy
Kurt J. Lindner
Perry L. Mehlman
Benjamin Meisenberg
William Molasky
Amelia F. Paul
Stella Diamant Perles
Bess B. Robinson
Esther Hellerstein Rothenberg
Albert Saifer
Benjamin Samuels
Scott Andrew Seidler
Merle Cohn Sievers
Jacob Simon
Goldie I. Smith
Blanche C. Steele
Gusta Shure Willer

JANUARY 9-15

Dr. Harry Agress
Joseph M. Arndt
Henrietta Bamberger
Bess Block
William Ivan Boxer
Milton David Breschell
Rose Lenore Brown
Nathan Bry
David A. Chernus
Beatrice Berger Epstein
Ann Esses
Meyer Frank
Samuel M. Friedman
Helen Lonergan Goldring
Samuel Heiling
Henry Honig
Minnie Isaacs
Edward Jacobs
Theodore Leo Kopelman
Mary Singer Krout
Albert Lissner
Sarah Lissner
Lena Marcus
Norma Schwarz Mendle
Pearl R. Mendle
Roswell Messing
Isidor E. Offenbach
Max Reichenberg
Arthur Rosenberg
Ford Zadik Salinger
Sarah Schwab
Fay Sharon
Julius Shmookler
Zelda Y. Siegfried
Emma Stein
June M. Stern
Bob Sundheimer
Sarah Turk
Sarah Bamberger Washauer

JANUARY 16-22

Pauline Aach
Dr. R. Scott Berger
Leona Bernard
Pearl Blustein
Abraham N. Brickman
Blanche Schiele Cohn
Lillie N. Ellman
Lillian Flegel
Bettye B. Friedberg
Walter Gelber
Isaac Greenfield
Louis Greenspon
Harry Scheuer Haas
Rose Wohl Herman
Marie B. Jacobs
Jack Kessler
Carolyn Kuttan
Matylda Lehr
Michael Levy
Theresa Hausman Loewenberg
Max J. Mayer
Bertha Michelson
Judith Gelfand Minkin
Maurice M. Newmark
Annie Pasternak
Helen Factor Ross
Benjamin Gottlieb Rubin
Louis Sachs
Moritz Henry Schuchat
Irving M. Schwartz
Nancy Shapiro
Bonnie Shure
Harry Simon, Jr.
Ira B. Simon
Esther Spitz
Joseph A. Stein
Eva Gregor Steiner
Edward Stillman
Arthur R. Tucker
William Waldman
Cora Schiele Weinstock
Marvin Weitzman
Sigmund Wolff

JANUARY 23-29

Hattie Barken
Rose Berliner
Julius Benoit Cerf
Julius Davis
Annabelle Diamond
Joseph Jay Edlin
Michael Edlin
Robert Eiseman
August Frank
Nathan E. Garber
Leonard A. Gilles
Joseph Glaser
Jeanne Goldberg
Mildred Greenblatt
Gertrude Gregor
Barney Grosberg
Rachel Haddad
Harry A. Horn
Kathryn Glaser Jacobs
Raphael B. Jacobs
Harold L. Jungman
Erna Schild Katz
Ralph E. Kaufman
Saul Kessler
Ann Trepp Koenigsberg
David Kriegshaber
Jakob Laufer
Fred S. Lederman
Sidney E. Liederman
Hattie Levy Louchheim
Fred T. Lowy
Florence J. Mainzer
William B. Milius
Mark Molasky
Lizzie Newman
Mollie Remel
Ida Rothman
Beatrice L. Salinger
Emma H. Samuels
Joseph Edwin Samuels
Ralph Jon Sherberg
Bertha Siteman
Jennie Stein
Alfred Steindecker
Lillie Nathanson Susman
Gustava Vorhaus
Louis G. Waldman
Anna Wildman
Edith Wilson
Mollie Gold Zar

Names listed have been placed in Perpetual Memorial.

For information as to how you may place a loved ones name
in Perpetual Memorial, please contact Sydney Masin at
smasin@ti-stl.org.

LIFE IN TRANSITION

"Life in Transition" is beginning its third session at Congregation Temple Israel. This group is facilitated by Jan Nykin, M.Ed., LCSW, and is for anyone experiencing a loss, whether through death, divorce, job loss, retirement or any other life circumstance.

Each meeting provides an opportunity for participants to share their personal experience with loss, and together, we will

*Look at the healthy grieving process

*Look toward resolution, adjustment, strategies for moving forward

*Figure out how to find fulfillment in the life you live today

The group will meet at 6:30 p.m. on Tuesdays, **Jan. 4, Feb. 1, March 1, April 5 and May 3** at Temple Israel, 1 Rabbi Alvan D. Rubin Dr.

Participation is free and open to the community. For information, contact 314-432-8050.

ADS



TEMPLE ISRAEL DATELINE

#1 Rabbi Alvan D. Rubin Drive
Creve Coeur, MO 63141-7670
Phone: (314) 432-8050
Fax: (314) 432-8053

www.ti-stl.org

January 2011

Tevet/Shevat - 5771

Volume XXXI / Number 4
www.ti-stl.org

STAFF

Amy Feder, Rabbi
Michael Alper, Rabbi
Mark L. Shook, Rabbi Emeritus
Eli K. Montague, F.T.A., Executive Director
Deborah Morosohk, R.J.E., Director of Education
Leslie Wolf, Deutsch Early Childhood Center Director
Carol Wolf Solomon, Director of Development and Communications
Judy Lewis, Director of Membership and Programming

OFFICERS

Dr. David Weinstein, President
David Chassin, Vice President, Facilities
Yale Hollander, Vice President, Membership
Ken Kraus, Vice President, Strategic Planning
JoAnne Levy, Vice President, Social Responsibility
Larry Linkon, Vice President, Fundraising
Ellen Brin, Treasurer
Michael Weiss, Assistant Treasurer
Carol Cohen, Secretary
Diana Rothbarth, Assistant Secretary

OFFICE HOURS

Monday - Thursday, 9:00 a.m. - 5:00 p.m.
Friday, 9:00 a.m. - 4:00 p.m.

NOTE: Temple Israel DATELINE (USPS: 128-700) is published monthly
except bi-monthly July-August by Congregation Temple Israel.
Periodicals postage paid at St. Louis, MO.

Postmaster: Send address changes to: Temple Israel DATELINE,
#1 Rabbi Alvan D. Rubin Drive, St. Louis, MO 63141-7670

PERIODICALS
POSTAGE
PAID
ST. LOUIS
MISSOURI



DATE *line*

Wishing you and your loved ones a very happy
and healthy 2011. Thank you for choosing to
belong to our Temple Israel family!