



Congregation Temple Israel

DATE *Line*

February 2011
Shevat/Adar 5771

Volume XXXI / Number 5
www.ti-stl.org

LEMON TREE AND THE CHAMPAGNE SPY

TO HEADLINE TEMPLE ISRAEL MARCH 6 ISRAELI FILM FESTIVAL

Lemon Tree and *The Champagne Spy* will headline Temple Israel's annual Israeli Film Fest on Sunday, March 6.

Co-sponsored by the Israel Engagement Committee and the Israeli House at Temple Israel, admission to the film festival is free, but seating is limited and reservations are required.

Both of these highly-acclaimed, award-winning films are based on true stories and are primarily in Hebrew with English subtitles.

Lemon Tree will open the film fest with a 3:00 p.m. screening in the May Chapel. The screening will be followed at 5:00 p.m. by a post-film discussion led by members of the St.

Louis Israeli community. The film fest will conclude with the 6:30 p.m. screening of *The Champagne Spy*. Complimentary light Israeli refreshments will be served between the two screenings.

In *Lemon Tree*, Salma, a Palestinian widow, stands up against her new neighbor, the Israeli Defense Minister, when he moves into his new house opposite her lemon grove on the green line border between Israel and the West Bank. The Israeli security forces declare that Salma's trees pose a threat to the Minister's safety and order them uprooted. Together with her young Palestinian lawyer, Salma goes all the way to the Israeli Supreme Court to try

to save her trees. Her struggle captivates the Defense Minister's wife, who is trapped in her home and unhappy life. Despite their differences and the borders between them, the two women develop an invisible bond. This film is suitable for children ages 10 and older and adults.



In *The Champagne Spy*, Egyptian generals and Cabinet members in the early 1960s knew Wolfgang Lotz as a wealthy German horse breeder with an engaging habit of sending champagne and other lavish gifts to well-placed friends. They thought of him as an ex-Nazi who later made a fortune in Australia. In reality, and to the astonishment of his Egyptian friends,

he was disclosed in 1965 to be a quiet husband and father, and an agent with MOSSAD, the Israeli intelligence agency. This film is for mature teens and adults.

To make a reservation to attend one or both films, contact the Temple office, 314-432-8050 or jdillon@ti-stl.org. For more information, call Jerry or Linda Koenig, 636-394-6027.

124th Annual Meeting

See pages 14-21 for photos and complete coverage of Temple Israel's Annual Meeting.

WORSHIP SCHEDULE

Friday, February 4, 2011

6:00 p.m. Tot Shabbat
6:30 p.m. Shabbat Service



Saturday, February 5, 2011

11:00 a.m. Shabbat Service
Bat Mitzvah of Madeline Spirtas
daughter of Eric and Janie Spirtas



Bar Mitzvah of Tyler Bernstein
son of Jeff and Sara Bernstein
Torah Portion: Exodus 25:1-9; 31-39
Haftarah: I Kings 5:26-31; 6:7-13

Friday, February 11, 2011

6:30 p.m. Shabbat B'Shir and
Jewish Family and Children's Service
Shabbat with guest speaker
Fred Steinbach (Please bring a
donation of canned goods.)



Saturday, February 12, 2011

11:00 a.m. Shabbat Service
Bar Mitzvah Jesse Ault
son of Sonia Ault
Torah Portion: Exodus 27:20-21; 28:1-5
Haftarah: Ezekiel 43:10-12

Friday, February 18, 2011

6:30 p.m. Shabbat Service

Saturday, February 19, 2011

11:00 a.m. Shabbat Service
Torah Portion: Exodus 32:1-8
Haftarah: I Kings 18:20-24

Friday, February 25, 2011

6:30 p.m. Shabbat Service
7:30 p.m. Pizza Shabbat Dinner

Saturday, February 26, 2011

11:00 a.m. Shabbat Service
Torah Portion: Exodus 35:20-29
Haftarah: I Kings 7:40-46

EXPERIMENTING WITH A NEW TIME FOR FRIDAY NIGHT SERVICES

When will Shabbat services begin?

Starting Feb. 4, on a trial basis, services will begin at 6:30 p.m. and last approximately one hour.

Will there still be time for eating and schmoozing as a community?

Even more! We will have light appetizers and wine at 6:00 p.m., and cookies and coffee following services.

Will we still have Tot Shabbat?

Yes, Tot Shabbat will still be at 6:00 p.m. on the first Friday of the month. This is in addition to our 6:30 p.m. Shabbat service.

Will there still be free babysitting at the 6:30 p.m. service?

Absolutely - no reservations required!

Why is the time changing?

We're trying to make our services more welcoming to families with young children, those who don't drive after dark, and those who want to have a nice Shabbat dinner without feeling rushed.

Is the change permanent?

This is an experiment, so please tell us what you think! In a few months we will evaluate the success of this experiment and determine whether or not to make the change permanent.

Will there be any new programming?

Yes! On the fourth Friday of every month we will have communal Shabbat dinner opportunities following services.

February 25: Pizza night! Sign up and pay for pizza when you arrive; we'll have it delivered and waiting when services are over.

March 25: Shabbat in the City! We'll have reservations made at area restaurants. When you arrive, you can sign up and join your friends at the restaurant of your choice.

April 22: Congregational Passover Dinner at TI. Advance reservations required.

TI RECEIVES URJ INCUBATOR GRANT FOR JEWISH PARENTS AS TEACHERS PROGRAM

Congregation Temple Israel is among 20 Reform congregations in North America selected to receive an Incubator Grant of up to \$5,000 from the Union for Reform Judaism to implement new programs to further engage current members and attract new members. According to the URJ, there were nearly 170 applicants for these grants.

Our Deutsch Early Childhood Center (DECC) will use this grant to fill a void in the St. Louis community caused by funding cuts to Missouri's "Parent as Teachers" program. "Parents as Teachers" provided families with a parent educator who offered guidance to parents as they raised their children from birth into the preschool years, including developmental screenings, information about child development and support.

"We see this as an opportunity to provide a new version of "Parents as Teachers" for St. Louis' Jewish families," says DECC Director Leslie Wolf. "We plan to provide the same quality program while also giving participating families the Jewish educational resources they need to enrich their lives and prepare them for active involvement in the Jewish community as their child grows up. This will attract young Jewish families who may not have otherwise sought out the Jewish community at this point in their lives."

KIDZROCK BAND CONCERT TO BENEFIT DECC

Dave Simon and the Kidzrock Band will present a family concert on Sunday, February 13, at 2:00 p.m. at Dave Simon's Rock School, 1305 Baur Blvd. in Olivette. This 45-minute concert will feature Mr. Joe, our Deutsch Early Childhood Center (DECC) Kidzrock teacher, and will include all the great songs our DECC children have learned to love.

Invite your friends and family. This concert is open to the community. Admission is just \$5 per family, with half of the proceeds benefitting DECC. In addition, the first 25 families to purchase tickets will receive a certificate good for a free frozen yogurt from Chill, a \$3 value. Tickets for the concert can be purchased through the DECC office, 314-432-8076 or kheil@ti-stl.org.

POKER NIGHT!!



Saturday, Feb. 12

7 - 9:30 p.m.

at Temple Israel

Please join TIFTY for an evening of fun as we raise funds for Camp Rainbow, a local summer camp for kids with cancer.
Poker and blackjack for all
Special kids tables for the little ones.
Raffles! Prizes for winners!

Snacks and soda provided.
(Adults 21 and older can bring their own beverages.)

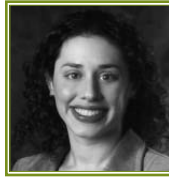
Cost: \$18 for ages 13 and older; \$5 for ages 12 and younger. Extra chips will be available for purchase.

RSVPs appreciated
314-432-8050, ext. 239
advisors@tifty.org



IF NOT NOW, WHEN?

Rabbi Amy Feder



This morning I watched as the two full-grown oak trees in front of my parents' home were cut down. The trees appeared healthy to me, but I learned that they had been dying for quite some time. No one is sure why – perhaps there was a bug infestation, or maybe a tree sickness of some kind. Or maybe, someone suggested, when my parents built their home nearly 25 years ago, the roots of the tree were touched or altered and it has just taken this long to see the affect.

I am not, by any means, a botanist. I have no idea what sickened these trees, but I must say that the third explanation resonated with me deeply. In building something precious, important, and new (a home), the roots of something equally precious (the trees) were altered and eventually lost. Who can say if it was worth it? How can we measure what is gained and what is lost in a time of change?

Over the past few months, Rabbi Alper and I have spent a great deal of time with our new Board President JoAnne Levy asking these same questions. We have been examining the culture, programming, and structure of Temple Israel and trying to determine, as new leaders, what we must build that is precious, important, and new, while doing our best to not affect the equally precious roots of what is already here. At times, we have the luxury of experimenting with change to determine the correct decision. Adjusting the time of Friday night services is one of these examples. This decision to experiment with a time change, while not made lightly, will still be evaluated and examined by staff and congregants to determine whether it should become permanent.

Other decisions have pushed us to alter our roots, with the hope that such changes will encourage new life to sprout and grow. One example is the dissolution of our Sisterhood. For years, Sisterhood membership has been dwindling, even under the superb and devoted leadership of Susan Stiefel, who has worked tirelessly to make it a success. Instead of simply cutting at the roots, we are trying to return to the original focus and goals of Sisterhood; to find ways of bringing women (and often men!) together for social and social action projects that build on their strengths and serve the community.

To that end, we have started a new group called The Challah Brigade. This motivated intergenerational group of men and women are first going to learn to bake challah, and then find ways to help our community feel supported by receiving fresh baked challah during significant moments in their lives. We had our first session at the end of January. Keep your eyes (and noses!) open to find out when the baking begins.

Another skill that many of our members share, in and out of Sisterhood, is the ability to needlepoint, knit, and sew. We are hoping to start another group of talented folks who would be interested in creating handmade crafts that can be shared with members – from those with new babies to those just needing a little warmth from TI. We'll be gathering on Sunday, February 27, at 10:00 a.m. to brainstorm and show off our crafts.

Together, as we move forward, we can plant new seeds and blossom with life in our congregation, building on our strong roots and growing every day.

afeder@ti-stl.org

CHUTZPAH

Rabbi Michael Alper



In the first weeks of 2011, just two months after performing here at Temple Israel for our rabbinic installation service, Debbie Friedman passed away. By the time this *DATELINE* reaches you, countless articles, services, and concerts will have been composed to honor her. My Facebook account is filled with messages from colleagues and friends from around the world who are mourning her loss. Seven thousand people watched her funeral as it was streamed live from Temple Beth Sholom in California. Locally, just hours after she died, the rabbis, cantors, and Jewish musicians in the St. Louis community began talking and planning our own memorial, which will be announced in the weeks to come.

All of this is to explain that what I am writing today is not new. You probably don't need to hear from yet another person whose life was touched by Debbie Friedman. Yet, as one of the many people who was so moved by Debbie's music that it, in a way, led me to become the Jew I am today, I would be remiss if I didn't share a bit from my heart.

One of the things that I loved about Debbie Friedman and that made her unique is that she was never a cantor or a rabbi. As a matter of fact, she did not even complete her college degree. It was because of her lack of a formal education as a Jewish professional that for years, many rabbis, cantors and educators completely rejected her and her music as legitimate or effective. The great irony of this is that Debbie Friedman's music was so powerful that it not

only changed the movement that shunned it, but in the last years of her life, Friedman was invited to teach at Hebrew Union College, the training seminary for rabbis and cantors of the Reform movement. Debbie Friedman proved that the heart and its song are stronger than the might or power of any organization.

Debbie Friedman gave Jewish prayer and song back to the Jewish people. She helped ensure that Judaism was not owned by the clergy. Every person could learn her songs and sing them with ease. And in learning her songs, they learned the stories and prayers of our tradition that may before have been out of reach. With *L'chi Lach* and *Not By Power*, she taught difficult texts from the Torah. With *Miriam's Song* and *Devorah's Song*, she taught about figures in the text, particularly women, who had been virtually ignored for centuries. With the *Alef-Bet Song* she taught basic Hebrew in a way that even toddlers could learn with ease. And, of course, with her countless liturgical songs, *Mi Shebeirach* most of all, she put the power and meaning of prayer back with the congregants who finally understood what they had been praying all along.

We will miss her always. May her legacy never be forgotten.

malper@ti-stl.org

A NOTE ABOUT YOUR ANNUAL SYNAGOGUE SUPPORT

Statements for renewing annual synagogue support were mailed to all congregants in December. We extend our sincere thanks to the many of you who have already responded generously by paying your annual support in full or by selecting one of our convenient monthly or quarterly payment plans. **If you are already on a payment plan and want to continue as is for 2011, you need do nothing at this time.**

In order for our congregation to operate in a fiscally responsible manner, we need ALL congregants to do one of the following **no later than February 15, 2011:**

Option 1: Remit your annual synagogue support payment in full by check, credit or debit card or through a donation of securities.

Option 2: Complete the form on the back of your statement (or contact us) to set up convenient quarterly or monthly payments via automatic charges to a credit/debit card or through automatic bank account withdrawals. Automatic payments eliminate the need for monthly statements, saving you and the Temple valuable time and resources. Please note that we process automatic payments on or around the 15th of the month, with quarterly payments occurring in January, April, July and October.

Temple Israel will never turn away any member due to financial hardship. Thanks to the extraordinary generosity of congregants who contribute far above our standard support levels as members of our Shofar Society, we are able to work with members who are experiencing financial hardship in a caring, compassionate and confidential manner. If, due to financial difficulties, you are unable to contribute at the level listed on your membership statement, please contact our Membership Director, Judy Lewis, 314-432-8050 or jlewis@ti-stl.org. She will work with you to determine a level of support that meets your needs.

If you have any questions or concerns, please contact Judy Lewis. Thank you for your continued generous support of Temple Israel. All contributions are tax deductible to the extent permitted by law. Together, we will fulfill our sacred responsibility and put Temple Israel on sound financial footing to serve our congregants now and for the future.

2010 ANNUAL REPORT NOW AVAILABLE

From our ReMARKable Weekend honoring Rabbi Mark Shook to our Installation Weekend with Debbie Friedman (z"l), 2010 was an active and eventful year for Temple Israel. Read all about the year that was in our 2010 Annual Report.

To conserve paper and the cost of printing and mailing, the report is available for viewing and downloading online at our website, www.ti-stl.org. Simply follow the link under "What's New." To request an electronic copy via e-mail, contact Marilyn Krinsky at mkrinsky@ti-stl.org.

Paper copies of the report are available in the Temple office during regular business hours. If you would like a copy mailed to you, please call the Temple office, 314-432-8050.

We are always looking for new programming ideas to meet the needs and interests of our congregants. If you have a suggestion for a new program, or would like to get involved or learn more about any of our current activities listed in the Annual Report, contact Judy Lewis, Director of Membership and Programming at jlewis@ti-stl.org or 314-432-8050.

ADVERTISER OF THE MONTH HILTON ST. LOUIS FRONTENAC

314-993-1100/www.stlouisfrontenac.hilton.com

Did you know that the *DATELINE* is produced at no cost to Temple Israel? The cost of printing and delivery is carried by our advertisers who appear each issue.

Please patronize our advertisers and tell them that you saw their company's ad in the *DATELINE*. When you patronize these businesses, it demonstrates that advertising in our newsletter is a good investment that produces a favorable return.

If you are interested in advertising your company or placing a personal greeting in the *DATELINE*, contact Carol Wolf Solomon at 314-432-8050 or csolomon@ti-stl.org.

JEREMY LIEB IS STL'S GOT TALENT FINALIST

Temple Israel's own Jeremy Lieb will perform as part of a duo act called Yey Big at Nishmah's production of StL's Got Talent, which will take place Sunday, February 13, at the William D. Purser Center of the Logan College of Chiropractic in Chesterfield. Jeremy, who is a music teacher at our religious school, will be among the 14 finalists performing in front of celebrity judges. Cash prizes will be awarded to the top two performances and there will be an "audience participation" award, so be there to vote for Jeremy. Your presence at the event will bolster his chances of winning.

Admission is \$35 for adults and \$20 for children and students. At the door, tickets will be \$40 for adults. Tickets can be purchased at www.StLGotTalent.com.

All proceeds from the event benefit Nishmah: The St. Louis Jewish Women's Project. Nishmah is 501(c)(3) organization.

IN OUR TEMPLE FAMILY

Mazel Tov to Brittany Broder who won a Voice of Democracy District Award.



TI families gathered on on Christmas morning to deliver "Meals on Wheels" with Interfaith Partnership-Faith Beyond Walls. The program was organized through our Religious School's Mitzvah Enrichment Program.

DEUTSCH EARLY CHILDHOOD CENTER OF TEMPLE ISRAEL

Leslie Wolf, Director

Our students and teachers at DECC are so very busy. We have just finished our International Week, which took us to Israel this year! It was awesome teaching our students about the land of Israel. They explored Israeli culture, which included learning about the land, weather, music, and, of course, the food! We boarded our imaginary El Al airplane and off we went. The children packed their bags and were given some shekels to spend. Everyone was exhausted by the end of the day! We visited the Haifa Zoo, the Dead Sea, and the Shiloh Tunnel, which is a 1,500-foot-long tunnel built in circa 701 BCE to protect Jerusalem's water source from Assyrian invaders. After visiting all those places, we stopped at an Israeli Bazaar, where the kids bought Israeli-made items. We then all had an Israeli snack of falafel before heading home on the plane. Everyone was exhausted and slept well that night. The teachers did an amazing job with this unit.

As I have mentioned before, one of our DECC's greatest strengths is our incredible teachers. This month I am highlighting our two newest teachers, Becky Sherman and Julie Rosen, who are teaching 2-year olds in our new Red Froggie room. Julie has a masters degree in education with an emphasis on remedial reading. She has previous experience teaching in the Fort Zumwalt School District, at New City School, and in the Pattonville School District. Julie and her husband, Leo, have two children; a son, Sam, who is 9 years old and a daughter, Allie, who is 6. Becky has a degree in early childhood education



Jonah Alper and his mom celebrate his second birthday at the DECC.

and has taught in the Pattonville School District for Special School District. She has extensive experience with preschoolers, having taught at both Shaare Emeth and Traditional Congregation Preschools. Becky is married to Rick Sherman. They have three girls; Alyson who is 21, Jordyn who is 16, and Lauren who is 15. They are both amazing teachers who bring so much to our DECC program. We are very fortunate to have them as part of our faculty.

In the coming months, I will introduce you to all the teachers who call DECC their home! Come visit and meet everyone. It's not too early to start thinking about registering for our Rabbi Mark and Carol Shook Preschool Camp this summer or enrolling for preschool next fall. Tell your friends about our wonderful school. Our building may not be brand new, however, it IS filled with warmth and love with plenty of hugs! Everyone knows your child at DECC. It is a very special place.

lwolf@ti-stl.org

SUPERSHARKS CHAVURAH

Families with young children are invited to join the Supersharks Chavurah at the Jewish Community Center's Disco Havdalah on Saturday, February 12, from 6:00-7:30 p.m. Meet your Temple Israel friends and others for music, snacks, Havdalah crafts and serious disco dancing! The cost is \$15 for JCCC members and \$20 for non-member families. To RSVP, e-mail Marianne at mchervitz@jccstl.org.

TEMPLE ISRAEL EDUCATION CENTER

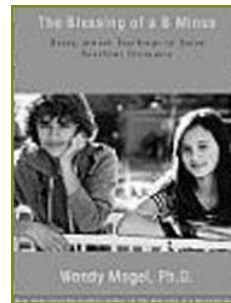
Deborah Morosohk R.J.E., Director of Education

If you're of my generation, when your children were young you were probably introduced at some point to a book called *The Blessing of a Skinned Knee* by Wendy Mogel. The author is a psychologist who offers excellent advice on how to raise children with confidence, using Jewish teachings as a guide. Now, like us, Wendy Mogel's children have grown up so she has just written a new book titled *The Blessing of a B Minus: Using Jewish Teachings to Raise Resilient Teenagers*.

Once again, Dr. Mogel intersperses Jewish texts and stories with her common sense advice on how to talk with teenage children. She understands that every teenager is different and that as parents, we need to use our understanding of our individual child to do what is right and guide him/her through these critical years.

One of the things I like most about Dr. Mogel's approach to parenting teens is that she encourages us to nurture their independence. She teaches that sometimes we need to step back and allow teens to mediate their own disputes and negotiate new situations on their own. She uses the following image from Torah to illustrate this point. "The book of Exodus describes the quality of God's presence during the Israelites' travels as a 'pillar of cloud by day...and a pillar of fire by night.' This beautiful image is a model for

parents whose children are wandering in the wilderness of adolescence. Like God, you stand by, providing shade and light when needed, but mostly you stand back. You detach. You wait to see if your child can solve problems on his own before stepping in; you let her experience the natural consequences of poor decisions; and you give him the freedom to make mistakes, even big ones."



In addition to independence, *The Blessing of a B Minus* addresses dealing with rudeness, stress, budgeting, and ethics. It also does not shy away from the important issues of alcohol, drugs, and sex. If your children are teenagers or will become teenagers sometime soon, I highly recommend this book to you.

If you would like to hear from Wendy Mogel in person, you're in luck. She is scheduled to speak in St. Louis on Monday, March 28. Her appearance is being co-sponsored by the Jewish Community Center and Mary Institute and Country Day School (MICDS). More details will be available soon.

dmorosohk@ti-stl.org

COMING UP IN ADULT EDUCATION

Tuesday, February 1, 7:00 - 8:30 p.m.

"Jewish Resistance in the Holocaust" presented by Bob Schnurman

Tuesday, March 1, 7:00 - 8:30 p.m.

"Cinema and Jewish Ethics" presented by Ron Scharff

FEBRUARY 2011

SUN	MON	TUES	WED	THU	FRI	SAT
		1 6:30 pm Life in Transition 7 pm TIFTY lounge night 7 pm Tuesday Institute 7:30 pm Scout Troop 11 Meeting	2	3 12:30 pm Rabbi's Roundtable Luncheon	4 6 pm Tot Shabbat 6:30 pm Shabbat Service	5 9:45 am Bible Study 11 am Shabbat Service Tyler Bernstein and Madeline Spirtas B'nai Mitzvah
6 1 pm TIFTY Board Meeting 3 pm Israeli House	7	8 5:30 pm New Board Member Dinner 7 pm Board Meeting 7:30 pm Scout Troop 11 Meeting	9 9:30 am Study Group	10	11 6:30 pm Shabbat B'Shir	12 9:45 am Bible Study 11 am Shabbat Service Jesse Ault Bar Mitzvah 6 pm TIFTY Poker Night
13 1 pm TIFTY Board Meeting 3:30 & 4 pm Israeli House 6:30 pm Cotillion	14 9 am Symphony Lecture 7:30 pm Scout Committee Meeting	15 7:30 pm Scout Troop 11 Meeting	16	17	18 6:30 pm Shabbat Service	19 9:45 am Bible Study 11 am Shabbat Service
20	21 Presidents' Day Office Closed	22 7:30 pm Scout Troop 11 Meeting 7:30 pm Youth Education Committee Meeting	23	24	25 6:30 pm Confirmation Class Lock-In 6:30 pm Shabbat Service	26 9:45 am Bible Study 11 am Shabbat Service
27 3:30 pm Israeli House 6:30 pm Cotillion	28 9:15 am DECC Parents Committee Meeting	<p>For the most up-to-date news on TI programs and events, subscribe to our weekly e-newsletter, <i>connectIons</i>, e-mail mkrinsky@ti-stl.org.</p>				

RELIGIOUS SCHOOL *calendar*

February 1

Hebrew School

February 5

Mitzvah Mania

February 6Religious School
Academy Electives
Hebrew School
Pre-Conf/Conf. Electives**February 8**

Hebrew School

February 111st/2nd Grade
Shabbat Dinner**February 12**

Mitzvah Mania

February 13Religious School
5th Grade B'yachad
Academy Electives
Hebrew School
Pre-Conf/Conf. Electives**February 15**

Hebrew School

February 20

NO SCHOOL

February 22

Hebrew School

February 25-26

Confirmation Lock-in

February 27Religious School
2nd Grade B'yachad
Academy Electives
Hebrew School
Pre-Conf/Conf. Electives

GIVE-A-MEAL-A-MONTH FEBRUARY

For the month of February, the Harvey Kornblum Jewish Food Pantry is looking for these specific items in order to provide well-balanced nourishment for the community in need:

Canned Tuna Fish, Canned Pasta with Meat, Peanut Butter and Jelly, Hearty Soups, Healthy Snacks, Personal Care Items (shampoo, toothpaste, soap and baby diapers--all sizes)

Items should be brought to your Temple or synagogue collection site.

For further information, please contact Louise Levine, (636) 227-1259.

BABY SITTING 101

Club 56 and JYG invite teens and pre-teens who are interested in babysitting to attend St. Louis Children's Hospital's Babysitting 101 class on Sunday, February 13, from 2:00-6:00 p.m. at Temple Israel. This four-hour class is a great introduction to the basics of babysitting. Topics covered include the business of babysitting, child development, safety/first aid, and fun and games. The cost for the class is \$24, which includes snacks and a workbook.

Participants who complete the class can choose to have their names included on a babysitting referral list that is being created for the convenience of Temple Israel members by Young Families Coordinator Stephanie Rhea.

For more information or to RSVP for the class, contact Stephanie at srhea@ti-stl.org or 314-302-7966.

CRAFTING FOR OUR COMMUNITY

Do you knit or needlepoint? How about sewing or scrapbooking? Would you like to use your artistic talents to help make our community a more warm and welcoming place?



Then join us on Sunday, February 27 at 10:00 a.m. in the Board Room! Bring ideas or samples of projects that you think might benefit the community. We can knit for newborns, create hats for people going through chemo, needlepoint for new members. We need your creativity and skill!

For more information, contact Rabbi Feder at afeder@ti-stl.org or 314-432-8050.

TIFTY

Temple Israel Federation of Temple Youth

Lots of activities took place in the month of January. On the 7th was the TIFTY Shabbat service on the theme of "God." On January 9 the TIFTY board had its mid-year meeting where we looked at where we've been, and where we're going for the rest of the year. Over the Martin Luther King Day weekend, 10 TIFTYites went to the winter Chavurah in Denver and had a blast. Last but not least, TIFTYites enjoyed an all youth group Israeli Dancing night in late January. Upcoming events for the month of February include a Camp Rainbow fundraiser on the 12th. (See the ad in this *DATELINE* for details.)

Presley Culp

Communications and Visuals Vice President.

CLUB 56

5th and 6th grade youth group

Club 56 and JYG invite all youth in grades 4-8 to join us for a howling good time on Saturday, February 26, from 6:30-10:00 p.m. We will travel to the Wild Canid Center (Wolf Sanctuary), where we will gather around a campfire to hear wolf stories, take a moonlight stroll to hear the wolves howl, and then enjoy hot chocolate and cookies. The cost is \$12 per person.

For 4th graders, this event offers an opportunity to step up and experience Club 56 for the first time. This will also be a great time for current 6th graders to learn about JYG.

For more information or to receive a registration form, contact Stephanie Rhea at 314-302-7966 or srhea@ti-stl.org.

JYG

Junior Youth Group Temple Israel

February will be full of fun for JYG. On February 26, we will join Club 56 as we head to the Wolf Sanctuary. The program will last from 6:30-10:00 p.m. For only \$12 you will get to hear wolf stories around the campfire, hopefully hear real wolves howl, enjoy cookies and hot chocolate, and have a great time with friends! This event will be one you won't want to miss! Make sure you turn in your permission slip and form right away to reserve your spot.

We're also busy preparing for our JYG Chavurah, which will take place the weekend of March 4-6. Make sure your application is complete and turned in because you're not going to want to miss Camp JYG weekend at Temple Israel. Our senior youth group, TIFTY, is planning the weekend, so this promises to be a good time!

Seventh and eighth graders are allowed to attend one youth group Chavurah a year and this is it! We'll participate in services, share meals, and do camp-like programming with 7th and 8th graders from around the Missouri Valley region. Participants will come from congregations ranging from Peoria, IL to Denver, CO. We are seeking host families from the congregation to assist us in housing teens who will be coming to St. Louis to attend the Chavurah. For more information or to volunteer, contact Jennifer Patchin, jennifr319@yahoo.com or 314-432-8050, ext. 239.

Jennifer Patchin

JYG Advisor

TEMPLE ISRAEL SISTERHOOD

Congresswoman Gabrielle Giffords once remarked, "If you want something done, your best bet is to ask a Jewish woman to do it. Jewish women – by our tradition and by the way we were raised - have an ability to cut through all the reasons why something should, shouldn't or can't be done and pull people together to be successful." This is certainly true of the women at Temple Israel, as is represented by the many women's groups that have helped support our congregation since its founding. In 1886, women came together to form the Ladies' Aid Society, which was formed to "assist in raising funds for the new building and to help in all matters pertaining to the welfare of the Temple."

Twenty years later, a newly named Ladies Auxiliary Society was created "with the purpose of assisting congregation Temple Israel and promoting sociability among its members." Eventually, the women of Temple Israel joined under the name Sisterhood, and have been involved in nearly every aspect of the congregation.

As we approach our 125th anniversary as a congregation, a new era for the women of Temple Israel is upon us as well. Who in the original Ladies' Aid Society might have imagined that we'd enter 2011 with a woman rabbi and a woman Board president? Women's roles in congregational life have changed, and our organizations must change with it. Therefore, we are taking the energy and leadership that have been put into Sisterhood and refocusing them on new committees and projects.

Susan Stiefel, our Sisterhood president for many years, is excited to be a part of the new Challah Brigade along with her daughter, Amy Stiefel Weinhaus, and a number of other individuals and intergenerational families.

By learning to bake challah and sharing the bread with those in our congregation, they are following the example set by generations of TI women before them.

Another offshoot of Sisterhood will be our new group for knitters, needlepointers, and other craft-minded members (men and women!) who wish to use their skills to benefit others in need.

One change that we hope will serve our congregation for the better is the reutilization of the gift shop. Thanks to the tireless volunteer efforts of Jane Gold, our gift shop has been open most weekday and Sunday mornings for those who wish to peruse its shelves and buy gifts. Yet with the advent of online shopping, we see fewer and fewer customers. Therefore, we have decided to sell our current inventory at a number of upcoming events, including Sunday mornings on the Bridge during religious school. Keep your eyes open for great sales! We are also going to transform the current gift shop space into a comfortable location for relaxing, schmoozing, and eating during onegs and kiddushes. For those of us who have a hard time walking to the Shoenberg Foyer for juice and cookies on Shabbat, we hope this will make it much easier to celebrate and visit together.

Our thanks go to everyone connected with Sisterhood, and particularly to Susan Stiefel, for all of their hard work with keeping this organization strong. We look forward to having many of you, women and men alike, participate in these new projects!

Rabbi Amy Feder

TEMPLE ISRAEL'S 124TH ANNUAL MEETING

More than 160 congregants attended the 124th annual meeting of our congregation on January 14. The evening started with a joyous Shabbat B'Shir service in song, followed by a congregational dinner chaired and coordinated by Linda Horwitz.

The annual meeting was convened immediately following the dinner. Highlights included: The election and installation of new Board officers, trustees, and lifetime members; Recognition of retiring officers and trustees; Addresses by outgoing President Dr. David L. Weinstein and incoming President JoAnne Levy; Presentation of Pillar of the Temple Awards to Walter Gusdorf and Dotty Pressman Tepper; Gift presentations to Dr. David L. Weinstein in appreciation of his four years of distinguished leadership as President of Temple Israel, and a tribute to Rabbis' Circle and Shofar Society members.

Citations for leadership in recognition for service on the Board of Trustees were presented to retiring officers and trustees Ken Kraus, Vice President of Strategic Planning; Judy Jacks; Art Lewis; Avery Seidel, and Dr. Howard Schlansky

Mazel tov to the following new Board officers, lifetime members, and trustees for 2011:

Officers

JoAnne Levy, President
Jonathan Bloom, Vice President-Membership
David Chassin, Vice President-Facilities
Pamela Dern, Vice President-Social Action
Harvey Harris, Vice President-Community Outreach
Michael Weiss, Vice President-Strategic Planning
Carol Cohen, Secretary
Dee Mogerman, Assistant Secretary
Cathy Goldsticker, Treasurer
Diana Rothbarth, Assistant Treasurer

Lifetime Board Members: Jack Deutsch and Dr. David L. Weinstein, Immediate Past President.

Trustees elected for a first, three-year term:

Ellen Brin, Burt Garland, Jr., Dr. Barbra Horn, Yale Hollander, Larry Linkon, Rob Litz and Dr. Mitchell Platin.

Trustees elected for a first, two-year term:

Ronald Chatmon, Dorette Goldberg and David Victor.

Trustees re-elected for a second, three-year term:

Thelma Davidson, Rob Epstein, Marcie Kalina, Jeremy Shook and Arnold Spirtas.



Rabbi Alper, Rabbi Feder and President David L. Weinstein, M.D. lead a communal blessing of new and returning Board officers and trustees.

PRESIDENT'S ADDRESS – DR. DAVID L. WEINSTEIN

Fellow congregants, members of the Board of Trustees, Rabbis Feder, Alper and Shook, staff and friends of Congregation Temple Israel,

Welcome, and thank you for joining us tonight at our 124th Annual Meeting. I must admit, it is hard for me to believe that it has been more than four years since I took the gavel from my predecessor, Neil Handelman. The time has definitely flown by. My formal written report to the congregation is on pages 4-7 in the Annual Report of Temple Israel that you each have in front of you at your tables. I encourage you to read my President's Message, as well as the reports of the various committees that very nicely highlight the events and accomplishments at Temple Israel over the last year. I will not repeat that information here tonight, but instead will use this time for a more personal reflection.

I am truly blessed to have had the opportunity to serve as the president of Temple Israel for the last four years. It has been an incredible personal experience for which I will forever be grateful. A large part of what made it so special is that you have provided me with wonderful support as a Board, as a congregation and as individuals. For this I am not only appreciative, I am greatly humbled.

At this time, I want to thank the person who has been my biggest supporter, my wife Liz. She not only allowed me to take on this position for four years (I always asked just one year at a time), she encouraged me to do so. She knows how deeply I feel about our congregation, our Temple Israel community. She has been at my side for more than thirty years, and for the last four years has joined me in spending most of our Friday evenings right here at Temple Israel,

together with you, our community and our friends. Thank you, Liz.

I also extend my sincere thanks to Rabbi Shook for his dedicated leadership of our congregation from 1987 until his retirement this past July, for his continued commitment to our Temple Israel community as Rabbi Emeritus, for his wisdom and guidance, and for his friendship.

Rabbi Feder and Rabbi Alper – We are so delighted to have you as our rabbis. Your presence has made the time commitment and work expended on behalf of our congregation all worthwhile. You are very special individuals with very special talents, and with the support of our congregation, we know that you will do great things and that the future of TI will be bright. I am excited to be an active participant in your rabbinate.

To our entire Temple staff, and especially to Eli, Debbie, Carol, Marilyn, Judy and Leslie - Thank you from the bottom of my heart for all that you do for our congregation on a daily basis, and for all that you have done to make my life easier these past four years.

I owe a special debt of gratitude to my fellow members of the Executive Committee. It has not been a walk in the park, but we never thought it would be. Thank you for four action-packed years of dedicated service to our congregation, for your candor and honesty in our meetings, and for your friendship. I hope that our time spent working together has been as rewarding to you as it has been to me.

(continued on page 16)



David L. Weinstein, M.D.

I also extend my sincere thanks to our entire Board of Trustees. Our agenda these past four years was always full, and we rarely had a dull or quiet moment. We faced a number of challenges and celebrated many successes together. Our challenges included two attempts to strengthen our congregation by exploring the potential for collaboration or merger with other Temples and our attempt to conduct a major capital and endowment campaign to address our facility needs.



Nominating Committee Chair Neil Handelman and David L. Weinstein, M.D.

We have also experienced many wonderful successes. We replaced the lower flat roof surrounding the perimeter of the building and the roof over the religious and preschool building. Thanks to a generous anonymous gift, we were also able to make our May Chapel accessible to all of our congregants and their family members. We have engaged in open communication with our congregants and educated them about our financial picture and our ongoing facility issues. We have made important decisions about who we are today, and are currently engaged in a process to determine where we want to be as a congregation in the future. We have made changes to our programming and worship style to attract and engage families with children. We have revamped our preschool program, and as a result have more than doubled our enrollment in just one year.

Our biggest success story of last year was our choice of a successor to Rabbi Shook. After conducting an extensive

national rabbinic search in accordance with the guidelines of our Reform movement, we made the decision that we knew in our hearts was the best for the future of our congregation. We selected one of our own - Rabbi Amy Feder – as our Senior Rabbi. While this selection defied convention and required a lot of time and effort on our part – it was worth every minute. I view our successful effort to secure our current rabbinic leadership as one of the proudest and happiest moments of my Presidency.

The challenges and successes of the past four years have taught me many valuable lessons. I have learned that large congregations move very slowly, and that change can be difficult to implement. I've also learned that the past four years are simply part of a much larger process – a very important and transformational process – that is helping to define our future as a congregation.

I believe that we have made significant progress towards transforming our congregation over the course of the past four years. But our work is not done. While it may be tempting to take a break and walk away when I pass the President's gavel to JoAnne Levy, my predecessors didn't do that to me and I assure you that I won't do that to JoAnne. There is much unfinished business concerning our facility, our capital and endowment campaign and our membership. The health and welfare of our congregation is not just JoAnne's responsibility, or even our Rabbis' and Board's responsibility. We are all collectively and individually responsible for Temple Israel. We are a community at TI, and everyone here tonight is an important part of that community. We each make a difference in one another's lives simply by being together. It is not what we have in our lives that's important, but who

(continued on page 17)

annual MEETING

we have in our lives that counts. The people who make a difference are not necessarily the ones with the credentials, but the ones who care. People may forget what you said, and they may forget what you did, but they will never forget how your concern and outreach to them made them feel. I see this every day in my profession and every Shabbat here at Temple Israel, as well. Too often we underestimate the power of a smile, a kind word, a listening ear, a compliment, or the smallest act of caring. These small acts of kindness impact our entire community. By reaching out and giving to one another, our lives become more meaningful, and we truly become part of a caring and sacred community. We have that here at Temple Israel, and I want to thank each of you for making this such a special community.

Life is a journey. It's not necessarily about reaching a destination. I am truly blessed to have spent the past four years of my journey with a wonderful Board of Trustees, supportive rabbis, a dedicated professional staff, and devoted congregants. I am honored to have served and worked with each and every one of you. I will sincerely miss the view from the *bimah* on the High Holy Days, knowing where each of you predictably sit year after year, but I look forward to rejoining my family in the more comfortable seats with better acoustics, and of course to hear the beautiful voice of our rabbi.

I will shortly pass the gavel on to our incoming president, JoAnne Levy. I do so with the confidence that our congregation will be in wonderful hands. For the past four years JoAnne has been a conscientious, thoughtful and active member of the Executive Committee. I know that she will work tirelessly on behalf of the congregation. I pray that you will give JoAnne the same wonderful support, guidance and friendship that you have provided to me over these past four years. May we always remember that the work we do and share on behalf of our congregation is never complete, and that the journey that we take together as a community is what is most important.



Retiring Board Member Avery Seidel and David L. Weinstein, M.D.



Retiring Vice President Ken Kraus and David L. Weinstein, M.D.



Retiring Board Member Art Lewis and David L. Weinstein, M.D.

ACCEPTANCE SPEECH – NEW PRESIDENT JOANNE LEVY



JoAnne Levy

Serving on the Board and Executive Committee of Temple Israel, which many of you have just agreed to do, or volunteering on a committee or a task force, or attending a Temple event or this Annual Meeting, takes time, energy and occasionally money!

Why do we do these things? Why are we all here this evening? Each of us has our reasons. I figure with almost 200 people here this evening, there are at least 300 different reasons. I want to share my reasons why I got actively involved at Temple Israel, culminating with tonight's installation.

But first, I want to outline the key issues facing Temple Israel, which will be our focus during the next year.

Our Worship - For those of you who were here earlier tonight for services, you know that our current rabbis will carry on our rich tradition of rabbinic excellence, through their words, prayers, and lessons of Torah. The bad news is that if my family really is in charge of music, I truly cannot sing – even with my nose pressed into the wall.

Our Facilities - As many of you heard during recent congregational meetings, we created an Alternate Options Task Force to focus on the future of Temple Israel's facilities, both our buildings and our properties. I am proud to say that this small group of very experienced and thoughtful congregants, led by former Temple Israel President Leonard Adreon, has set a very high standard for quickly kicking off, digging in, and getting to the tough business of developing a recommendation for the future of

our facilities. Will we move? Will we build? What can we afford? These are the questions actively being explored by this Task Force. The ultimate course we select will dictate an update of Temple Israel's Strategic Plan, which is now five years old, and will be the basis for a formal development/fundraising plan.

Our Financial Status -- No-one who wants to be a Temple Israel congregant is turned away for financial reasons. Many years ago, that policy enabled my grandparents to join Temple Israel, and my family has been part of this Congregation ever since. That longstanding policy of not turning away anyone in financial need requires a lot from those of us who can afford membership. We owe it to all of our members, from the highest levels of the Shofar Society and Rabbis' Circle to those most in need, to operate Temple Israel in a fiscally responsible manner. As we determine our future facility, education and programming plans, we will be striving for sound financial plans, which includes both revenue – membership dues, donations and potentially a building fund – and expenses, most of which are related to our facilities and our staff. Watch for some changes. To help reduce the Temple's outside expenses, for instance, we are exploring the creation of a volunteer corp. This could be your opportunity to contribute your time, expertise and energy to help Temple Israel.

Our Members - In today's world of constantly changing priorities, we must be able to articulate the value of being part of our Temple Israel family. To help identify who's in that family, how many of you would like a current membership directory? Learning more about our current members will build a sense of community as well as increase our electronic

(continued on page 19)

annual MEETING

communications, which are fiscally and environmentally more friendly. With our growing early childhood center, we will be focusing more on young families, who are the future of our congregation. New multi-generational groups, such as the Challah Brigade and the Misterhood, are just beginning - these are opportunities to help take care of our Temple family.

Our Educational Programs - Where would we be without education? From our early childhood center to our youth religious and Hebrew schools, during B'nai Mitzvah and Confirmation preparation, through Bible study and speaker programs for our very oldest adults, Temple Israel offers first-rate educational programs. We must determine how best to fund those programs, to continue to make them as relevant and valuable as possible, and to attract new members who want to learn with our rabbis and staff.

Our Celebrations - Did you know that Congregation Temple Israel will turn 125 years old in the fall of 2011? In addition to our usual activities and events, we have a special anniversary to celebrate in 2011. Plans are underway to do just that, in meaningful, fun, and multi-generational ways. Look for a 1-2-5 theme: 1 "family of families," 2 rabbis, 5 events!

So back to why. Why am I here; why devote time to Temple Israel? The answer is not merely that I grew up at Temple Israel. It's possible to grow up here and not get actively involved. For many years, for me, that was the case. But when my husband Jim and I had children, all five of whom are here tonight, it became important to us that our family belonged to something, a community greater than ourselves. What is a community? It's a family - maybe not related by blood, maybe not sharing the same names, maybe not a "traditional" family, maybe not a family that worships all in exactly the same ways, but a family all the same. Here at Temple Israel, we will be striving to be a "family of families" - a place where you can worship, learn and enjoy your family, and also be part of a greater family

your Temple family.

And there's another reason why I am here. My teenage daughter recently told me that she likes being at Temple Israel because at Temple Israel, people know who she is and she can see all those Confirmation photographs of her brother, her mom, her aunts and uncles, and even her grandpa on the hallway walls! So my other reason for being part of Temple Israel is to help create a legacy for our children. Almost 125 years ago, a small group of our ancestors created Temple Israel, a legacy to hand to us. We now owe it to our future generations to hand them a strong legacy - a congregation and a community that means something.

Thanks to each of you for being here tonight and for what you do as members, volunteers, friends, and leaders of Congregation Temple Israel. I am thrilled to be working with our Rabbis and staff, and am proud to begin serving as your President.



JoAnne Levy accepts the President's gavel and keys to the Temple from outgoing President David L. Weinstein, M.D.

PILLAR OF TEMPLE ISRAEL AWARDS PRESENTED

Walter Gusdorf and Dotty Pressman Tepper were honored as Pillars of the Temple at our annual congregational meeting on Friday, Jan. 14. Rabbi Shook established the Pillar of the Temple award in 2005 to “give recognition to congregants who seek no plaudits or honors for themselves, but give tirelessly for the well-being of the congregation.” In making the presentation at the annual meeting he noted that this year’s honorees truly exemplify the spirit of the award.

Walter Gusdorf is an accomplished woodworker and cabinet maker. He has used his talents to handcraft reading tables and other items that grace the Temple’s *bimah* and enhance the congregation’s worship services. Walter also devoted many years of service to the congregation as a vice president of the Brotherhood, where he was responsible for promoting the work of the Jewish Chautauqua Society, and as a member of the our congregation’s Building and Grounds Committee.

For 21 years, Dotty Tepper has been teaching our youth at Temple Israel about the importance of giving back to the community. She initiated Mitzvah Mania at Temple Israel, a program that provides our 7th grade religious school students with hands-on experience serving the community. Through Mitzvah Mania, our youth serve as tutors and mentors for children and teens at Hosea House,

a program of the Guardian Angel Settlement Association in St. Louis that provides emergency assistance and services to families in need. Not a year goes by without a member of our Confirmation class stating that their Hosea House experience was the most meaningful of their religious education.

Mazel tov to Walter and Dotty on this well-deserved honor!



Rabbi Emeritus Mark L. Shook presents the Pillar of the Temple award to Dotty Pressman Tepper. Walter Gusdorf was out of town and unable to accept the award in person.

ANNUAL MEETING PHOTOS



Officers of Temple Israel for 2011 are (seated, from left) Carol Cohen, Secretary; JoAnne Levy, President; Diana Rothbarth, Assistant Treasurer; Pamela Dern, Vice President-Social Action; (standing, from left) Jonathan Bloom, Vice President-Membership; David L. Weinstein, M.D., Immediate Past President; Michael Weiss, Vice President-Strategic Planning; Cathy Goldsticker, Treasurer; Dee Mogerman, Assistant Secretary, and David Chassin, Vice President-Facilities. Not pictured is Harvey Harris, Vice President-Community Outreach.



2011 Board of Trustees.

Tributes received as of January 10

**ALLAN & GLORIA MOLASKY/BARRY & MARTI SIMON
CHILDREN'S PROGRAMMING FUND**

In honor of a speedy recovery of Michael Davis
Marti and Barry Simon

DEUTSCH EARLY CHILDHOOD CENTER FUND

In memory of Sylvia Alper
Patty Gold
In memory of Lester Lamberg
Ivy and Michael Klein

In memory of Jack Shuman
Ivy and Michael Klein

ENDOWMENT FUND

In memory of Sandy Breadman
Judy and Art Lewis
Karen Schwartz
Karen Smith
In memory of Fay Handshear
Sheryl Breadman and Eli Montague
In memory of Lester Lamberg
Sheryl Breadman and Eli Montague
Carol and Paul Gusdorf
Janet Katz
Marilyn Krinsky
Wilma and George Levin
Lynne, Mike and Rachel Lippmann
Sydney and Howard Masin
Diana and Jim Rothbarth

In memory of Jack Shuman
Audrey and Leonard Adreon
Mary and Walter Beissinger
Mickey Gelber
Rachel and Jesse Halpern
Myra Shapiro
Noma Simon

In memory of Mary Schraier
Sheryl Breadman and Eli Montague
In memory of James Thomeczek
Sheryl Breadman and Eli Montague
Judy and Art Lewis

In memory of Alan Weilitz
Mr. and Mrs. William Becker

In honor of Rob Litz being elected to the Board of Trustees
Adele and Arthur Litz

**FRIEDA & LESTER HANDELMAN
EARLY CHILDHOOD ART FUND**

In honor of the Installation of Rabbi Feder and Rabbi Alper
Ronnie and Gary Handelman

In honor of Burt Garland's Installation to the Board of Trustees
Ronni and Gary Handelman

GENERAL FUND

In memory of Lester Lamberg
Cathy and Robert Goldsticker
JoAnn Stephan

GERSHMAN SENIOR CITIZEN'S FUND

In memory of Al Prel
Barbara Sandmel

GIVE-A-MEAL-A-MONTH FUND

In honor of the Give-A-Meal-A-Month Fund
Jan Nykin

HARVEY M. GILLERMAN MUSIC & BOOK FUND

In memory of Rod Fadem
Margaret Gillerman
Mark Schlinkmann
In memory of Bernard Gerchen
Jeanie and Don Bassman
In memory of Helen Novack
Margaret Gillerman
Mark Schlinkmann
Marcia Gillerman
Don and Jeanie Bassman and Family
In memory of Don Ross
Jeanie and Don Bassman
In honor of Phillip Gould
Margaret Gillerman
Mark Schlinkmann
Marcia Gillerman

JOHN & ANNA LEE BROWN SCHOLARSHIP FUND

In memory of Sandy Breadman
Susie and Allan Epstein

KIRK NACKMAN GARDEN FUND

In memory of Don Ross
Joan and Les Nackman

LIVNOT CAMPAIGN FUND

In memory of Sandy Breadman
JoAnne Levy and Jim Thomeczek
Carol Wolf Solomon and Jeff Solomon
In memory of Lester Lamberg
JoAnne Levy and Jim Thomeczek and Family
Liz and Larry Linkon
Carol Wolf Solomon and Jeff Solomon
In memory of James Thomeczek
Liz and Larry Linkon
Carol Wolf Solomon and Jeff Solomon

February **TRIBUTES**

In honor of Jerry Levy

JoAnne Levy, Jim Thomeczek and Family

In honor of the Bar Mitzvah of Shane Kreinberg

Carol Wolf Solomon and Jeff Solomon

LYNNE & ARNIE COLE URJ CAMP SCHOLARSHIP FUND

In honor of the Lynne & Arnie Cole URJ Camp Scholarship Fund

Lynne Cole

RABBI MARK L. SHOOK LIFETIME LEARNING FUND

In memory of Fay Handshear

Norman Handshear

Barbara and David Victor

NATHAN KAHN - ERNESTINE KAHN -

CHARLES KAHN FOUNDATION

In memory of Lester Lamberg

Thelma and Marvin Davidson

In memory of Jack Shuman

Thelma and Marvin Davidson

In honor of JoAnne Levy's election as President of Temple Israel

Thelma and Marvin Davidson

In honor of Thelma Davidson's re-election to the Board of Trustees

Marvin Davidson

RABBIS' DISCRETIONARY FUND

In memory of Sandy Breadman

Judy and Ken Rosenthal

In memory of Marvin Brasch

Billie Brasch

In memory of Harvey Friedman

Dorismae Friedman and Family

In memory of Zelda Greenberg

Natalie Biskin

In memory of Marian Huber

Sydney Huber

In memory of Lester Lamberg

Dr. Robert Lamberg

Bill Lamberg and Cindy

John Lamberg

Judy and Art Lewis

In memory of Lee Schwartz

Betty Schwartz

In memory of Jack Shuman

Teddi and Ted Baumgarten

Bernadine Shuman

In memory of Art Simon

Noma Simon

In appreciation of Hildegard Rochman

Helen and Ralph Goldsticker

In appreciation of Rabbi Mark L. Shook

Susan and Robert Levin

In honor of the Shofar Society

Judy and Jerry Levy

RABBI MARK AND CAROL SHOOK CAMP UPKEEP FUND

In memory of Jack Shuman

Bernadine Shuman

THE YAHRZEIT FUND

In memory of Samuel Bender

Ruth and Harvey Bender

In memory of William Brodsky

Lisa Ring

In memory of Gloria Esther Brownstein

Byron Brownstein

In memory of David Ellman

Diane Packman

In memory of Mildred R. Feldman

Suzanne Lasky

In memory of Elmer Gidlow and Selma Gidlow

Audrey Friedman

In memory of Florence Gertrude Gold

Jane and Al Gold

In memory of Bernard Goldman

Robin and Scott Alton

In memory of Wilma J. 'Billie' Goldstein

Roz and Ben Kessler

In memory of Ida-Mae Herzmark

Ralph A. Herzmark

In memory of Jan Susan Holtzman

Martin M. Holtzman

In memory of Maxine Jane Jacks

Sidney Jacks

In memory of Melvin Kranzberg

Margie Lazarus

In memory of Rose Lamberg

Judy and Art Lewis

In memory of David Lending

Theresa Schwartz

In memory of Sophie Harris Lending

Joy Lending

In memory of Henry Lawrence Lewis

Judy and Art Lewis

(Tributes Continued)

In memory of:

Dorothy Liermark

Dorothy Schuman

Selma Weissman Weiss

Sanford Weissman

In memory of Shirlee Mehlman and Perry Mehlman

Betsy Mehlman

In memory of:

Harry A. Meyer

Selma C. Meyer

Connie Bowser

Leah Rubin

In memory of Bess Rainey

Jeanne and Don Ferman

In memory of Max Reichenberg

Margot Richards

In memory of Geraldine "Gerry" Rubenstein

Lynn Wallis

Sarah, Chad, Charlie and Kate Wallis

In memory of Dan Schwartz

Theresa Schwartz

In memory of Adolphia Q. "ottie" Seelig

Cara and Robert Seelig

In memory of Tillie Seigal

Ina and Allan Padratzik

In memory of Ruth I. Serkes Silverstein

Phyllis and Terry Weiss

In memory of Donald S. Stolar

Cary Stolar

In memory of Elizabeth Stone

Robert Stone

In memory of Helen Thaller

Adrienne and Martin Rosen

In memory of Charles Tober

Beverly Tober

In memory of Frederick Weiss

Phyllis and Terry Weiss

In memory of Henry White

Gail Gerchen

In memory of Celia Widman

Marilyn and Sam Fox

Condolences:

The congregation extends our deepest sympathy to the families of:

Sylvan Fry

Zelda Greenberg

Harriet Abrams Karney

Lester Lamberg

Dorothy Marie

Liebetau Peck

Vera Winston Propp

Jeffrey Alan Rudolph

Mary Schraier

James W. Thomeczek

Robert W. Wegusen

WHAT'S NEW AT NEW MT. SINAI?

By the time you read these words it will be February and the first signs of spring will be appearing at New Mt. Sinai Cemetery. The southern magnolia trees will be budding and the crocuses will be popping up in the gardens. If you have not seen New Mt. Sinai bursting with colors in the early spring, you need to hop in your car and drive over here (It really is closer than you might think!) and take a scenic drive through the beautiful 52 acres that make up the only Jewish cemetery in St. Louis that is listed on the National Register of Historic Places.

Don't forget that when you purchase property at New Mt. Sinai, Temple Israel will benefit from a contribution made on your behalf. For more information, call our office at 314-353-2540, or visit us online at www.newmtsinaicemetery.org.

THE SHIRLEY POST BIMAH FLOWER FUND

January 28-29: *In honor of Emily Smotkin's Bat Mitzvah*

With love from your family, Barbara, Howard, Michael, Lauren and Julia

ONEG

January 28: *In honor of Emily Smotkin's Bat Mitzvah*

Barbara and Howard Smotkin

JEWISH FOOD PANTRY BASKETS

January 14-15: *In honor of Alexander Smoller's Bar Mitzvah*

With love from your grandfather, William Collins

JAN. 30-FEBRUARY 5

Dorothy K. Abraham
Ann Glazier Abramson
Lillian Allen
Johanna Alsberg
Dora Bach
Ferdinand S. Bach
Lucile Calisch Baer
Louis Berman
Grace D. Brickman
Mollie Cotler
Beatrice Cruvant
Melvin Degroote
Eva Engel
Henry Epstein
S. Lester Feldman
Allison Beth Gall
Solon Gershman
Manuel Goldberg
Virginia Lasker Goldman
Hans K. Hagen
Lillian B. Jossem
Leon L. Katzenstein
Mary Jane Kirsner
Hortense Goodman- Kohn
Joe W. Kopman
Herman S. Landau
Irene Appel Lederman
Irina Levitskaya
Marie Baer Littmann
Anna Manne
Charles B. "Chick" Meyerson
Stanley L. Michelson
Fannie Nehmen
Robert K. Oxenhandler
Lena Peltason
Ida Rosenberg
Dr. W. Louis Schuchat
Alvin J. Shuchart
Isidor J. Siegfried
Carle Joseph Snider
Charles Steinberg
Alfred Freund Steiner
Earl Susman
Ray A. Weil
Alberta J. Weiss
Lucille Olian Yellen
Rose Yusman
William Zeve

FEBRUARY 6-12

Fannie Sanders Berger
Henry Blatt
Charlotte Brandt
Samuel Bridge
Shirley R. Broderson
Julia Singer Bry
Geraldine Carp
Jeanette Weiner Charnas
Dr. Norman Ward Clein
Moses M. Cohn
Dr. Arnold Dankner
O. Anna Davis
Shirley Ruth Drohlich
Jules Dubinsky
Mary Fadem Efron
Sol H. Engel
Edith Kriegshaber Felsenthal
Arthur A. Fishel
Myron N. Fisher
Sophie Littmann Freund
Clara Fuchs
Irene Gall
Helen Stone Gelfand
Gus Gillerman
Robert Goldenhersh
Nathan Greenberg
Lester J. Handelman
Martin Handler
Ella Gregor Hartmann
Emil Hartmann
Pauline Manlin Helman
Emma Hesse Isselbacher
Leopold Isselbacher
Mendel Jacobson
Jason Kawin
Edith Levi
Herbert Marples
Emil Mayer
Gertrude L. Mendelson
Fred Michelson
Regina Michelson
Janet Fuller Miller
Gussie Harris Nathan
Saul L. Nymark
Magnus F. Poulson
Milton Rimmel
Bernard Rosenblum
Arthur Rosenfeld
Morris Roufa
Barrett Scallet
Bess Brand Schneider
Jeanet P. Schnurmacher
Joseph H. Silversmith
Michael Victor II
Fannie Waldman
Tesse B. Werner
Samuel Lesem Wisebart
Nancy Kline Wolfheim

FEBRUARY 13-19

Sam Agatstein
Elliott S. Bender
Hannah Ruth Bender
Maurice Benson
Irvin Bettman, Jr.
Herman Bernard Blum
Joseph B. Diamond
Wallace N. Emmer
Rose K. Fry
Marilyn Mendelson Fudenberg
Arthur Goldstein
Leah S. Gross
Fanny Guckenheim
Sigmund Gusdorf
Annie Harris
Simon Abeles Harris
Otto Hirsch
Ann Katzenstein
Adolphus Klauber
Joseph Leonard Kohner
Jeffrey Samuel Kopman
Mollie Guckenheim Landauer
Henrietta Berg Loewenstein
Julius Mannheimer
Harold D. Marglous
Fritz Marx
Hubert P. Moog
David T. Portman
Armin Price
Nathan Rosenberg
Jane M. Scheff
Martha Schneider
Bertha Schoen
Leon J. Schwab
Sarah Levy Shanblum
Sylvia Shanfeld
Joseph Sharf
Sarah Pattiz Smissman
Harriett Trepner
Carrie Vetsburg
David H. Wagner
Maurice Weil

FEBRUARY 20-26

Helen Sternberg Ackerman
Albert Arndt
Isadore Auer
Josef B. Bloch
Rose Blumberg
Lillian Caplin
Rose M. Cole
Louis Dern
Norman S. Dertke
Sarah Halle Edison
Moses J. Ehrlich
Lena Frank
Harry Fuchs
Matilda Honig
Tema Kopman
Pauline Landauer
Irvin S. Lang
Marvin S. Levin
Sylvia Levin
Marion Jacobson Lieberman
Louis Londy
Alice Jane Miller
Louis M. Monheimer
Dora Kopman Moss
Anna May L. Nussbaum
Joan Frank Plattner
Sadie Seidel Rickensohl
Betty Rosenberg
Frank Ross
Sidney Sacks
Jack M. Schultz
Rachel Stix Schwab
Albert M. Schwartz
Flora Siegfried
Richard A. Silverman
Nat Singer
Ruth Reichman Solomon
Gunter Herbert Stern
Joe Tabachnick
Henry Wagner
Bill Wallis
Eugene S. Weil
Paul Kalter Weil
Curt E. Weiss
Edith Newman Weiss
Richard M. Weiss
Vera 'Bobbie' Weiss

Names listed have been placed in Perpetual Memorial. For information as to how you may place a loved ones name in Perpetual Memorial, please contact Sydney Masin at smasin@ti-stl.org.

TODAH RABAH

TO OUR DECEMBER USHERS:

Linda Cherrick, Brent and Karen Comensky, the Kreinberg Family, the Mrazek Family, Sheri O’Gorman, Harry O’Gorman, Jake Sandweiss, the Smoller Family.

TO OUR DECEMBER BAR MITZVAH PRESENTER:

Adele Lewis

TO OUR OFFICE VOLUNTEERS:

David Irgang and Loren Ludmerer for helping to stuff our Annual Meeting invitations.

Audrey Montague for volunteering to answer phones at the reception desk every Monday.

Joan Moscowitz for answering phones at the reception desk.

ADS

ADS



TEMPLE ISRAEL DATELINE

#1 Rabbi Alvan D. Rubin Drive
Creve Coeur, MO 63141-7670
Phone: (314) 432-8050
Fax: (314) 432-8053
www.ti-stl.org

February 2011
Shevat/Adar 5771

Volume XXXI / Number 5
www.ti-stl.org

PERIODICALS
POSTAGE
PAID
ST. LOUIS
MISSOURI

STAFF

Amy Feder, Rabbi
Michael Alper, Rabbi
Mark L. Shook, Rabbi Emeritus
Eli K. Montague, F.T.A., Executive Director
Deborah Morosohk, R.J.E., Director of Education
Leslie Wolf, Deutsch Early Childhood Center Director
Carol Wolf Solomon, Director of Development and Communications
Judy Lewis, Director of Membership and Programming

OFFICERS

JoAnne Levy, President
Jonathan Bloom, Vice President - Membership
David Chassin, Vice President - Facilities
Pamela Dern, Vice President - Social Action
Harvey Harris, vice President - Community Outreach
Michael Weiss, Vice President - Strategic Planning
Carol Cohen, Secretary
Dee Mogerman, Assistant Secretary
Cathy Goldsticker, Treasurer
Diana Rothbarth, Assistant Treasurer

OFFICE HOURS

Monday - Thursday, 9:00 a.m. - 5:00 p.m.
Friday, 9:00 a.m. - 4:00 p.m.

NOTE: Temple Israel DATELINE (USPS: 128-700) is published monthly
except bi-monthly July-August by Congregation Temple Israel.
Periodicals postage paid at St. Louis, MO.

Postmaster: Send address changes to: Temple Israel DATELINE,
#1 Rabbi Alvan D. Rubin Drive, St. Louis, MO 63141-7670



DATE *line*

REMINDER

Starting Friday, February 4, Shabbat services
will begin at 6:30 p.m. on a trial basis.
