



Congregation Temple Israel

DATE *Line*

April 2011
Adar II / Nisan 5771

Volume XXX / Number 7
www.ti-stl.org



3rd Annual

Fruit of the Vine

wine tasting at Temple Israel

Saturday, April 30, 2011

5:30-7:30 p.m.

Isserman Auditorium

Music by pianist Byron Brownstein

Admission: \$25 before April 22
\$30 at the door

Taste a wide variety of fine wines from six distributors.

Sample gourmet hors d'oeuvres, artisan cheeses and other delicacies.

Order wine at below retail discounted prices.

Stock up for a party, Bar/Bat Mitzvah or wedding, or buy a few bottles to enjoy at home. A portion of every purchase benefits Temple Israel.

Advance reservations preferred.

By check to Temple Israel, attn: Wine Tasting / 1 Rabbi Alvan D. Rubin Dr. / St. Louis, MO 63141
For credit card reservations, call 314-432-8050

Co-Chairs

Hui Hua & Keith Bernstein, Sarah & Ron Falkoff
Claire Schenk & Richard Greenberg, Betsy & Jeff Schechter

TI Hosts Regional JYG Chavurah
See page 16 for Highlights

WORSHIP SCHEDULE

Friday, April 1, 2011

6:00 p.m. Tot Shabbat
6:30 p.m. Shabbat Service

Saturday, April 2, 2011

11:00 a.m. Shabbat Service
Torah Portion: Leviticus 13:1-8
Haftarah: II Kings 5:1-8

Friday, April 8, 2011

6:30 p.m. Shabbat B'Shir Service



Saturday, April 9, 2011

11:00 a.m. Shabbat Service
Bat Mitzvah of Traci Baron
daughter of Michael and Sandy Baron
Torah Portion: Leviticus 14:33-42
Haftarah: II Kings 7:3-11

Friday, April 15, 2011

6:30 p.m. Shabbat Service
Hakol Choir will sing
Gimel Hebrew Students will participate

Saturday, April 16, 2011

11:00 a.m. Shabbat Service
Torah Portion: Leviticus 16:1-10
Haftarah: Ezekiel 22:1-9

Friday, April 22, 2011

6:30 p.m. Passover Shabbat Service
7:30 p.m. Passover Shabbat Dinner

Saturday, April 23, 2011

9:00 a.m. Torah Study and
10:00 a.m. Community Shabbat
Service at United Hebrew

Monday, April 25, 2011

11:00 a.m. Passover Memorial Service

Friday, April 29, 2011

6:30 p.m. Shabbat Service



Saturday, April 30, 2011

11:00 a.m. Shabbat Service
Bat Mitzvah of Hannah Simon
daughter of Steve and Lael Simon
Torah Portion: Leviticus 19:1-10
Haftarah: Amos 9:7-10

PASSOVER SHABBAT DINNER



Join your fellow congregants for a kosher
for Passover Shabbat dinner after
services on Friday, April 22.

Cost is \$12 for adults and
\$8 for children 12 and younger.

RSVP to Sydney Masin by Friday, April 15,
at smasin@ti-stl.org or 314-432-8050.

A SHABBAT TO EXPLORE

Congregation Temple Israel is hosting a Shabbat to Explore
on Saturday, April 16, 9:30 - 11:30 a.m.
at the Powder Valley Nature Center.



Explore: The meaning of Shabbat
through an interactive story
appropriate for all ages.

Explore: Natural beauty through a
walk on the paved paths of Powder Valley.

Explore: Your family's eating habits and how to prepare
healthy meals that your family will eat with pediatrician
Dr. Howard Schlansky. A light, healthy snack will be served.

Explore: Your creative side with a great craft project.

Explore: New friends and families.

RSVP: To Stephanie Rhea, young family consultant,
314-432-8050 or srhea@ti-stl.org
by Monday, April 11, 2011

Cost: \$10 per family. Checks made payable to Temple Israel.

3RD ANNUAL SHABBAT ST. LOUIS SERVICE PLANNED

Temple Israel will participate in the 3rd Annual Shabbat St. Louis community-wide Shabbat service to take place at 10:00 a.m. on Saturday, April 23, at United Hebrew Congregation, 13788 Conway Rd. in Chesterfield. New this year will be Torah study with area Reform rabbis beginning at 9:00 a.m. There will be no Bible Study or Shabbat service at Temple Israel that day. A Kosher-for-Passover Kiddush reception will follow the service. All generations are invited to attend and are asked to bring a can of food to be donated to the Harvey Kornblum Jewish Food Pantry.

This year's service is being planned and organized by a committee of representatives from the sponsoring congregations in consultation with the Reform Rabbis of St. Louis. Nancy Kodner is representing Temple Israel on the committee. The band HaShemesh is once again donating their musical talent to accompany the service.

Participating congregations include B'nai El Congregation, Congregation B'nai Torah, Congregation Kol Am, Congregation Shaare Emeth, Temple Emanuel, Temple Israel of Alton, IL, Congregation Temple Israel of St. Louis, and United Hebrew Congregation. Shabbat St. Louis. For more information, visit the Shabbat St. Louis website, www.shabbatstlouis.org.

ST. LOUIS NORC

Temple Israel's collaboration with the St. Louis Naturally Occurring Retirement Community (NORC) is expanding! All NORC programs occurring in The Gathering Place at the Creve Coeur Jewish Community Center or in the Jewish Federation Kopolow Building will now be open to all Temple Israel congregants ages 65 and older.

Here are a few of the April events -

Monday, April 4 - 11:00 a.m. "On Safari in Tanzania" Travel Talk with Jeff Morgan

Monday, April 11 - 12:30 Brown Bag Lunch (JFed) 1:00 p.m. History Film Series

Friday, April 15 - 10:00 a.m. Advocacy for making NORC safe for walking

11:30 p.m. Shabbat Lunch with JCC Early Childhood students

Thursday, April 28 - 1:00 p.m. "How to Preserve your Nest Egg with Fall Prevention Strategies" with Susan Goldstein

To view the complete April calendar of programs, visit www.jewishinstlouis.org/norc.

Please call Laura at 314-442-3255 to let her know which programs you plan to attend.

JOIN US FOR WALK'N TALK'N TORAH

Congregation Temple Israel introduces a new monthly program on May 15, at 9:30 a.m. The Rabbis, Temple member Dr Howard Schlansky and other guests will host a 90-minute session devoted to walking and other forms of light aerobic exercise, D'Var Torah and nutritional advice and a nosh.

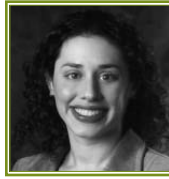
This will be an opportunity in a casual setting to renew your Jewish mind, body and soul while giving one the opportunity to get to know other temple members.

These gatherings are open to all congregants and their guests. While all ages are encouraged, future events will at times be geared specifically toward families with children of all ages and our pet dogs.

It takes 22,735,680 steps to walk from Saint Louis to Jerusalem. Our goal is to count our participants daily steps to see if our combined efforts can reach Jerusalem in one year. More information will be forthcoming, so save the date, pass the word and start breaking in those walking shoes.

IF NOT NOW, WHEN?

Rabbi Amy Feder



As I write this article, uprisings are still shaking the Arab world from Tunisia to Yemen - and above all in Egypt, where at least 200,000 protesters yesterday staged the largest demonstration yet against Mubarak's rule. Cries of freedom, rebellion, and political unrest are reverberating throughout the Middle East, and no one knows when they will end or what the result might be. Many of our hearts are directed towards Israel, wondering how our friends and loved ones there are doing. We pray that the after effects of these uprisings will bring about open and honest discussion, new possibilities for peace, and a bright new future for all who live in the region.

It is hard to imagine what other monumental changes may have occurred in the Middle East by the time these words reach you. I cannot foresee whether I should be writing about the joys of freedom or the perils of living in uncertain times. Yet, if nothing else, I know we will at least be closer to Passover, a holiday which reminds us of our own history with both of these themes. It is a commemoration not only of rebellion and liberty, but also of the dangers that such change can bring.

On Passover we celebrate the exodus of the Israelites from Egypt in biblical times. We retell the story of God's deliverance of our ancestors, of the 10 chances God gave Pharaoh before he finally let His people go. At our Passover seders, we sing the same songs of freedom our people have been singing for centuries, rejoicing at the fact that they escaped slavery.

It is a thrilling experience just to recall the story and imagine that our ancestors had the courage to stand up and face those who oppressed them.

Yet those of us who study Torah remember that the exodus was only the beginning. After the Israelites achieved their freedom, they discovered that life without a sense of direction and security was unsettling. Even with strong new leaders like Moses, Miriam and Aaron to lead the way, they *kvetched* their way through the desert for 40 years, wandering aimlessly and dreaming of the life they once had back in Egypt, slavery and all. In the end, only a select few of those who initially left Egypt, who actually fought for their well-deserved freedom, were able to see the Promised Land. Nearly all of the Israelites who escaped Egypt perished before they really tasted the freedom of living in a land of their own.

So what will the modern-day Egyptian, Tunisian, and Libyan people experience? Will their stories be purely of the joys of freedom, or like our ancestors, will they be tinged with the dangers that liberation can bring?

In either case, we cannot remove ourselves from their story. In our seder, we say the words, "*B'chol dor v'dor* - in every generation, each person must see himself as if he were the one who escaped Egypt." This year, these words take on an additional meaning. May our minds be open enough to imagine ourselves in the lives of those embroiled in the conflict today, and may we have the courage to take a stand in the name of freedom, whatever the result.

afeder@ti-stl.org

CHUTZPAH

Rabbi Michael Alper



The Pope has a new book out, and I may have to splurge on a hardcover copy. In *Jesus of Nazareth: Holy Week: From the Entrance Into Jerusalem To The Resurrection*, Pope Benedict XVI has officially exonerated the Jewish people for the death of Jesus. Now, you may be thinking to yourself, "The Jews are still being held responsible for Jesus' death?" After all, in 1965, the Second Vatican Council document "*Nostra Aetate*" already said that Jesus' death could not be attributed to Jews as a whole at the time or today. That decision revolutionized the Church's relations with Jews and tremendously improved interfaith dialogue and relations.

Yet we know that a formal religious document written by the Church does not necessarily make it to the masses. When it comes to things like bigotry, ignorance and hatred, most people do not first rush to make sure they have formal backing for their beliefs. A personal, easily understood book by the Pope, however, one that can be found on Amazon and in bookstores everywhere, is a different story. What's more, the Pope's explanation of why the Jews can't be held responsible for Jesus' death is put in clear, understandable terms.

First, Benedict explains that when the Gospel of John uses the phrase "the Jews," he is not indicating the entire Jewish people, as one might read it today. The author of John was not talking about the Jews as a race, per se, but rather a specific group of Jewish leaders, the aristocratic priests who called for Jesus' death.

He also explains the meaning of the term "may his blood be on us and on our children." You may remember the uproar this phrase caused when Mel Gibson came out with his

movie *The Passion* just a few years ago. Upsetting as the movie may have been, the producers at least had the foresight to realize the trouble that phrase might have caused. They compromised by keeping the phrase in Aramaic but not translating it into English, which meant that only the handful of us who understand Aramaic actually knew what the actors were saying.

The Pope explains, though, that this phrase should not be troubling at all. He says that it is not a curse but a kind of blessing. "The Christian will remember that the blood of Christ ... is not spilled against anyone but ... for many, for all," Benedict writes. "Read from the point of view of the faith, this means that we all need the purifying force of love, and that force is his blood. These words are not a curse, but redemption, salvation."

To be honest, I am still wary of the papacy and its proclamations. I do not have an abiding faith in that institution to undo the tradition of passion plays, anti-Semitism, and a long-held philosophy of deicide. Alternately, we see widespread change occurring throughout the Middle East and we are encountering a new era of communication, possibly as significant as the one in which the printing press was invented. My greatest hope is that we have entered a time in which this message of tolerance can spread throughout all the world's religions.

malper@ti-stl.org

L'DOR V'DOR – FROM GENERATION TO GENERATION

Editor's Note: Temple Israel is celebrating its 125th anniversary starting this fall. We have so much history at Temple Israel – If you have a story you would like to share your family, a Temple event that has special meaning, or a Rabbi who touched your heart, or if you have any old photographs at Temple Israel, contact Nancy Solomon at nancysolomom@charter.net. It is important to preserve our history for generations to come!

I have always been interested in family history. I love to hear stories about my relatives. I learned that in 1879, my great, great grandfather, Joseph Romansky, was one of the founders of Beth Hamedrosh Hagodol, an Orthodox shul here in St. Louis. His father, Jacob Romansky, had been a *matzah* merchant in Lithuania. Later, around the 1900s, his daughter, Bertha, and her husband, Charles Grosby, baked Passover *matzah* for St. Louis families. These kinds of stories make a connection to past generations.

I have been at Temple Israel since I was in kindergarten. In

1978 I was confirmed here. In 2008, my daughter, Liz, was confirmed, and in 2011, my daughter, Claire, will

take her place in the long line of Temple Israel confirmands in our family.

We looked at the confirmation pictures on the wall. "Here's Mom, and here's Aunt Joyce and Aunt Ellen!" Looking at the really early pictures we found a Ben Manheimer. Manheimer was my mother-in-law's maiden name. What about the Joel Manheimer on the list of founding members? Could they all be related?

The short answer is "yes." The more interesting answer...

I did some research using the internet, and information from the Brodsky Library. Joel Manheimer was born in 1830 and married Rosalia Maas in 1853. In 1861, during the Civil War, Joel joined the Union Cavalry. In 1886, Joel Manheimer, Liz and Claire's great, great, great-grandfather, was one of the 63 founding members of Temple Israel.

In 1909, Ben Manheimer, Joel's grandson, was in the sixth confirmation class. His was the first class to be confirmed in the sanctuary of Temple Israel, then located at Kingshighway and Washington. Ben Manheimer was Liz and Claire's great-grandfather.

In 1941, Ben's daughter, Marion Manheimer (Solomon), was confirmed at Temple Israel. Marion was Liz and Claire's



grandmother. In January, 1949, Marion married Dave Solomon and moved to Birmingham, Alabama. In 1963, their son, Edward (Liz and Claire's dad) was born. Even though he lived in Birmingham, Edward went to Washington University in St. Louis.

There is Temple Israel history on my side of the family as well...In 1923 or 24, Belle Grosby (Levin), Liz and Claire's great-grandmother, was confirmed at Temple Israel, as were Belle's sisters, Helen Grosby (Langsam) and Evelyn Grosby (Yawitz). It is believed that Liz and Claire's other



great-grandmother, Grace Rothman (Brickman), was also confirmed at Temple Israel, but records from that time were destroyed in a fire. Belle and Grace were life-long friends, as was evidenced when Belle's son, Robert, married Grace's daughter, Susan, in July 1961. In August 1962,

I was born.

In 1978 I was confirmed at Temple Israel. After graduation from Tulane University in 1984, I came back to St. Louis. After graduating from Washington University, Edward stayed in St. Louis to work for IBM.

As history shows, Edward and I were destined to join our families together. In 1956-57, Edward's grandmother, Blanche Manheimer, and my great, great aunt, Dolly Yawitz, served on the Temple Israel Sisterhood Board together.

In 1984, Edward and I met when I crashed his fraternity party with my friends. In 1986 we were married by Rabbi Alvan Rubin, interestingly enough, 100 years after the founding of Temple Israel. Liz was born in 1992 and Claire in 1995. They both went to Sunday School and became Bat Mitzvah at Temple Israel. Liz was confirmed in 2008, and Claire will be confirmed June 7, 2011, 125 years after her great, great, great-grandfather, Joel Manheimer, was one of the founding members of Temple Israel.

L'Dor V'Dor,
from generation, to
generation to
generation.



ENGAGING IN ACTS OF LOVING KINDNESS

Are you or is someone you love a member of Temple Israel who might like a friendly visit from someone in the congregation? Please let us know of congregants who are in a skilled care, assisted living, rehabilitation or nursing facility or who are home-bound. Temple Israel is here for you even when you are no longer able to come to us! Contact Sydney Masin at the Temple, 314-432-8050 or smasin@ti-stl.org, with your name and contact information, and we will schedule a visit with one of our rabbis or congregant volunteers.

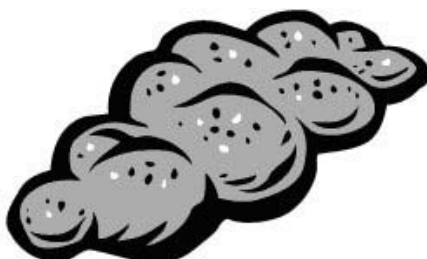
A MITZVAH OPPORTUNITY

The *mitzvot* of visiting the sick and caring for the aged are two of the most important values in Jewish tradition. They bring joy to both the giver and the recipient. Judy Jacks, the chair of our Tikkun Olam Committee, is organizing a group of volunteers to assist our rabbis in making periodic visits to home-bound congregants and to those living in skilled care, assisted living, rehabilitation or nursing home facilities. If you are interested in participating, please contact Sydney Masin at the Temple, 314-432-8050 or smasin@ti-stl.org. We would love to have you join us in this meaningful, powerful experience.

SUMMER OPPORTUNITIES

Are you a student looking for an unpaid summer internship or community service opportunity? Are you a retiree or empty nester looking for volunteer work? Temple Israel is seeking volunteers to assist us in contacting congregants to update their membership information. This will involve interviewing families to verify and update our records and then entering any new or corrected information into our membership management database. For more information or to volunteer, contact Rabbi Amy Feder, 314-432-8050 or afeder@ti-stl.org.

Challah! Challah! Challah!



Bakers and Bakers to be! Please join the Challah Brigade to bake challah (beginners welcome), build community, and send our challah out in the community to brighten people's days.

Sunday, April 10, 9:00 a.m.

Amy Ferman Slakman and Naomi Landis will lead the baking. They will be using Barbara Landis' special recipe. Mrs. Landis' challah was a special Shabbat treat for Rabbi Feder growing up, since she lived just a few houses down. She can personally guarantee it is delicious!

Sunday, May 22, 9:00 a.m.

Marcia Mermelstein will lead the baking. You may know Marcia from the many hats she wears in the Jewish community, but you may not realize that she was the talent behind the goodies at Winslow's Home for quite a while! She is a baking aficionado and swears everyone can learn to bake.



Come bake with us!



Crafting for Community



Creativity for a cause!

Join new friends and old at Temple Israel to knit, needlepoint, craft, and crochet. Beginners welcome!

Meet in the lounge (the former gift shop) by the May Chapel

Sunday, April 3, 9:30-11:30

Sunday, May 1, 9:30-11:30

Sunday, June 5, 9:30-11:30

Thursday, April 21, 1:00-3:00

Thursday, May 19, 1:00-3:00

Thursday, June 16, 1:00-3:00



DEUTSCH EARLY CHILDHOOD CENTER OF TEMPLE ISRAEL

Leslie Wolf, Director

We made it through the awful winter weather! It is so exciting to see our DECC students playing outside again and enjoying the fresh air. I am excited to tell you that we are working on a plan to purchase additional equipment for our north and south playgrounds. Our very generous Parents Committee has offered to designate some of its fundraising money to help make this plan a reality! The new equipment will enhance both playgrounds and will enable us to tailor the south playground to our youngest children. We are hoping to have these upgraded playgrounds ready in time for the start of summer camp.

Our children and teachers have all been very busy baking and entertaining dads at their classroom Dads' Breakfasts. It is so very cute to see all the dads bringing their children to school in the morning and then staying for breakfast. Our students enjoyed this exciting change to their morning routine, and once the dads were here, it was hard for them to leave and go to work!

With spring approaching, we are also looking forward to the celebration of Passover. All of our students will learn the story of Passover and will participate in classroom seders. We will eat *matzah* and make *charoset* and will learn the traditional songs that go along with this holiday. Passover is such a wonderful family holiday that introduces young children to the many rich traditions associated with it.

It is a holiday where even the youngest children are encouraged participate! Our DECC students will begin to learn the Four Questions and the meaning behind them. It is also a special time for family and friends and a time to celebrate being Jewish.

Enrollment is currently underway for both our Rabbi Mark and Carol Shook Camp for this summer and for the 2011-2012 school year at DECC. We currently have more than 110 children enrolled at DECC and expect even more students next year. We are already starting to fill up class space for next year. If you know of families with children ages 6 months through 6 years who may be interested in our program, have them contact me at 314-432-8076 or lwolf@ti-stl.org. Thank you for helping to get the word out about our awesome camp and school!

lwolf@ti-stl.org



Children enjoyed up close and personal visits with a variety of reptiles and animals at Community for Critters. The event raised more than \$2,000 for our Deutsch Early Childhood Center.

TEMPLE ISRAEL EDUCATION CENTER

Deborah Morosohk, R.J.E., Director of Education

Informal education is defined as education that takes place outside the standard school setting. At TI, we recognize that informal education – the learning that takes place outside the classroom, is an important component of our overall educational program.

Informal education happens when we run special school activities like our Passover Program, which will be held this month for grades 3-6. Students will literally walk through the steps of the Passover Seder in a unique, interactive game as they move from station to station, learning as they go, about the 15 sections of the seder.

Our retreats for students in grades 1-8 provide another wonderful opportunity for informal learning. Two of these grade-level retreats will take place in April. We take students away overnight to spend Shabbat at a camp where they will participate in special learning activities, worship services and song sessions, and spend time hanging out and getting to know each other better. Our experience has shown that when we eat, sleep, play sports, and hike together, as well as learn together, we build our community and create a great foundation for future learning in both formal and informal settings.

For grades 9 and 10, our major informal learning experience comes in the form of a class trip. This year 9th graders boarded a bus on a Friday morning and made their way to Cincinnati, Ohio, where they stayed at the Hebrew Union College-Jewish Institute of Religion (HUC-JIR) and took part in programming led by a rabbinic student at the school. They were introduced to the American Jewish Archives housed at HUC-JIR while they explored their trip theme,

“Living as a Jew in a non-Jewish World.” Other Cincinnati destinations on their itinerary included visits to Grailville Farm and the National Underground Railroad Freedom Center.

This year’s 10th grade Confirmation trip will be, for the first time, a visit to New York City. Our rabbis lived in New York for four years and are eagerly looking forward to sharing all the Jewish culture that is found there with their students. This trip is scheduled for the first weekend in June, just before the Confirmation ceremony itself.

In addition to these informal learning experiences that we incorporate into our Religious School program, there are many other informal learning opportunities for children both outside our religious school and outside our congregation. Participating in a Jewish youth group and attending Jewish summer camps are two of the best experiences for building positive Jewish identities in our children.

The instruction students receive at Religious School and Hebrew School is most effective when it is combined with informal learning experiences. Encourage your child to attend his/her retreat or class trip. Give your child a push to attend that youth group program or to go to a Jewish summer camp. Celebrate Jewish holidays in your home and open up discussions about Jewish topics at the dinner table. When all of these components come together, we create a new generation of Jews who know who they are and who are proud of their Jewish identity.

dmorosohk@ti-stl.org

APRIL 2011

SUN

MON

TUES

WED

THU

FRI

SAT

For the most up-to-date news on TI programs and events,
 subscribe to our weekly e-newsletter, *connectIons*.
 E-mail mkrinsky@ti-stl.org

1

2

6 pm
Tot Shabbat

9:45 am
Bible Study

6:30 pm
Shabbat Service

11:00 am
Shabbat Service

3

4

5

6

7

8

9

1 pm
TIFTY Board Meeting

6:30 pm
Hakol Choir Rehearsal

6:30 pm
Life in Transition
7 pm
TIFTY Lounge Night
7 pm
Tuesday Institute
7:30 pm
Scout Troop 11

9 am
Opera Lecture

12:30 pm
Rabbi's Roundtable

6:30 pm
Shabbat B'Shir

9:45 am
Bible Study

11:00 am
Shabbat Service

3 pm
Israeli House

10

11

12

13

14

15

16

9:45 am
Adult Education

9 am
Symphony Lecture
6:30 pm
Hakol Choir Rehearsal
7:30 pm
Scout Committee

7 pm
Board of Trustees
7:30 pm
Scout Troop 11

9:30 am
Study Group

6:30 pm
Shabbat Service

9:30 a.m.
Shabbat to Explore
9:45 am
Bible Study
11:00 am
Shabbat Service

1 pm
TIFTY Meeting

17
9:45 am
Adult Education

18
Passover begins at sundown
1st night Seder

19
Passover
Temple Offices closed

20
Passover

21
Passover

22
Passover
6:30 pm
Shabbat Service

23
Passover
9 am Torah Study and 10 am
Community Shabbat Service at United Hebrew

1 pm
TIFTY Chocolate Seder
3 pm
Israeli House

24

25

26

27

28

29

30

Passover
1 pm
TIFTY Meeting

Passover
Temple Offices closed
11 am
Passover Memorial Service and Kiddush

7:15 pm
Committee Night
7:30 pm
Scout Troop 11

6:30 pm
Shabbat Service with HaShemesh

9:45 am
Bible Study
11:00 am
Shabbat Service
5:30 pm
TI Wine Tasting

RELIGIOUS SCHOOL *calendar*

April 1-2

3rd/4th Grade Retreat

April 3

Religious School
Academy Electives
Hebrew School
Pre-Conf./Conf.

April 5

Hebrew School

April 8-9

2nd Grade Retreat

April 9

1st Grade Retreat

April 10

Religious School
Academy Electives
Hebrew School
Pre-Conf./Conf.

April 12

Hebrew School

April 15

Gimel Hebrew Students
at Shabbat Service

April 16

Mitzvah Mania

April 17

Religious School
Tot Holidays
Academy Electives
Hebrew School
Pre-Conf./Conf.

April 19

NO HEBREW SCHOOL

April 24

Religious School
3rd Grade B'yachad
6th Grade Field Trip
Academy Electives
Hebrew School
Pre-Conf./Conf.

April 26

Hebrew School

April 30

Mitzvah Mania
Alef Kabbalat
HaSiddur Program

PASSPORT TO ISRAEL

Parents of religious school students in grades 3 and up are encouraged to enroll their children in the Passport to Israel program. This savings program, created by the Jewish Federation of St. Louis, is designed to take the sting out of the cost of an educational trip to Israel for our young people. For each year that a student is enrolled in Passport to Israel, the Jewish Federation will place \$100 into a special savings account in the name of the student. Families are expected to contribute \$200 annually until the student reaches the 10th grade.

Temple Israel provides our member families with additional support by donating \$100 per student annually for up to 25 TI students enrolled in the program, thereby reducing the annual contribution from these families to \$100 per year. We are currently supporting our maximum of 25 students. New students who enroll in the program will be placed on a waiting list to receive this additional funding from the Temple. As our currently-enrolled TI students reach 10th grade or withdraw from the program for any reason, the students on our wait list will start receiving the additional support from TI on a first-come, first-served basis. Up until such time, families must continue to pay their full \$200 per year. We encourage you to enroll as openings do occur each year!

In order to be eligible, a student must be enrolled and in good standing in our Religious School, and be in at least the 3rd grade. Students must participate in Passport to Israel through the 10th grade. The trip to Israel may take place any time between the conclusion of the 9th grade through age 26. Applications are available from our Education Center by contacting Gale Hilburg, 314-432-8077 or [e ghilburg@ti-stl.org](mailto:ghilburg@ti-stl.org).

COMING UP IN ADULT EDUCATION

Tuesday, April 5, 7:00 - 8:30 p.m.

"Passover Cooking Workshop" presented by Sarijane Freiman

Sundays, April 3, 10 and 17, 9:45 - 11:15 a.m.

"Jewish Views on Messianism" presented by Rabbi Alper

Tuesday, May 3, 7:00 - 8:30 p.m.

"Jewish Resistance in the Holocaust" presented by Bob Schnurman

JYG

Junior Youth Group Temple Israel

March was a great month for our Junior Youth Group. The JYG Chavurah and the Purim Carnival kept JYG members very busy at the beginning of the month. We took the second half of March off for Spring Break and are ready to dive into April!

All 8th graders are now invited to participate in TIFTY events for the remainder of the school year, in addition to our JYG programs. We hope this transition time is very exciting. TIFTY has invited 8th graders to come to their lock-in on April 1. This event promises to be a lot of fun and is a great way for the 8th graders to learn about youth group and form some bonds with our high school teens.

All 7th and 8th graders will be participating in a Passover chocolate seder with TIFTY on Sunday, April 17. Watch your e-mail for a flyer about this sweet event. At this seder, all of the traditional foods and beverages are replaced with chocolate equivalents. For example, we will have chocolate milk instead of grape juice and green M&Ms instead of parsley. There is a great story to replace the traditional Passover story as well. Come to participate and eat all the chocolate you can handle!

For questions about these upcoming events and about JYG in general, contact advisor Jennifer Patchin, jennifr319@yahoo.com or 314-307-9940.

CLUB 56

5th and 6th Grade Youth Group

Club 56 welcomed the incoming 4th grade class into the Club with a howling good time on Saturday night, February 26. Our brave group of 20 went to the Endangered Wolf Center to spend the evening with the wolves! In addition to listening to great wolf tales around the campfire and enjoying hot chocolate and treats, we all really got into howling at the wolves, and the wolves REALLY did howl back. It was incredible!

The annual Temple Israel Purim Carnival was so much fun! Thank you to our TIFTY youth group members for working so hard to put on a great event for us all to enjoy!

Club 56 is looking forward to our planned visit to Sports Fusion in April.



Club 56 and JYG members had a howling good time at our "step-up" program at the Endangered Wolf Center.

YOUNG FAMILIES

Our Temple Israel Sushi Night outing was a great success. Thank you to everyone who came out to meet and enjoy the company of other adult members of our TI community. The sushi was good, and the company was fantastic! Events like this are all about making connections. I've heard from a number of Sushi Night attendees who have commented that they have already seen some of the people they met that night at other Temple events. Be on the lookout for more great adult events down the road.

Young families and people of all ages enjoyed our Community for Critters event on Sunday, Feb. 27. A very special thank you goes to Karen Lucy, Deutsch Early Childhood Center teacher, for bringing this wonderful program to our Temple Israel community. Everyone in attendance enjoyed this unique, hands-on experience with animals.

Our Prelude to Purim on March 11 was another great event for our TI community. Everyone enjoyed the strolling magician, great food and drinks. Watching the children ride the pony and donkey cart was entertaining for all.

More great family events are in store for the month of April. We will enjoy the peaceful beauty of Shabbat in the beautiful outdoors surroundings of the Powder Valley nature center on Saturday, April 16. We will gather at 9 a.m. for an outdoor Shabbat nature hike and a light breakfast. The paths are paved, so bring those strollers for your young children. We promise a good time for all!

For information about upcoming events for young families, contact Stephanie at 314-432-8050, ext. 243, or srhea@ti-stl.org.



Gregg and Joy Blustein Bassett enjoy the recent TI Sushi night at Sushi AI restaurant.

2011 RUBIN ISRAEL EXPERIENCE TRIP

The Jewish Federation of St. Louis is offering 10 young Jewish adults ages 27-40 who have never visited Israel the opportunity of a lifetime – to visit Israel from Oct. 30-Nov. 9, 2011 at no cost. Thanks to the generosity of Ron and Pam Rubin, this free trip includes flights, hotels, transportation, security, guide, meals and programming.

For complete eligibility requirements and to download an application, visit www.jewishinstlouis.org/rubin. For more information, contact Margo Newman, 314-442-3865 or mnewman@jfedstl.org.

The trip is organized and staffed through the Jewish Federation of St. Louis.

TIFTY HOSTS REGIONAL JUNIOR YOUTH GROUP CHAVURAH

Were you at Friday night services or otherwise in the TI building the weekend of March 4 - 6? If so, you may have noticed a few extra visitors... make that 160 visitors! TIFTY did an amazing job hosting this year's regional Junior Youth Group (JYG) Chavurah weekend. Teens from Missouri, Illinois, Iowa, Nebraska, Kansas, Wyoming and Colorado attended the chavurah on the theme "Camp NFTY: Your Summer Comes Early." The weekend kicked off on Friday. TIFTY members and JYGers led our congregation's Friday night Shabbat service. Andy Cohen, TIFTY's membership vice president, gave an inspiring sermon on "the Big Circle." The Saturday morning Shabbat service included camp songs and an amazing camp-themed sermon by Ellie Morosohk, TIFTY's programming vice president. Throughout the weekend, we tie-dyed tee-shirts, enjoyed Israeli dancing, learned about reptiles, made friendship bracelets, participated in social action programming, and had fun being Jewish together! Saturday night included a SLIID (our half of the region) vs Western (the other half of the region) basketball game at the JCC (SLIID WON!), swimming, games, and more. The weekend wrapped up Sunday morning with a slide show of the weekend and our traditional friendship circle. The weekend wouldn't be complete without floor shaking as we yelled the NFTY cheer (Gonna live and die for N-F-T-Y!) and lots of hugs! *Mazel tov* to Andy Cohen, Presley Culp, Ellie Morosohk, and Healy Slakman, the JYG Planning Committee, as well as the rest of the TIFTY Board and all those TIFTYites who helped plan programs on a fantastic weekend! A special thank you goes out to all our volunteers, host families, TI staff, and everyone else who helped make the weekend the HUGE success it was!



tyg CHAVURAH



Tributes received as of March 8.

DEUTSCH EARLY CHILDHOOD CENTER FUND

In honor of Madeline Spirtas' Bat Mitzvah

Lori Sheinbein

In honor of Tyler Bernstein's Bar Mitzvah

Lori Sheinbein

ENDOWMENT FUND

In memory of Dolly Dorothy Framer

Rose G. Framer and Family

In memory of Sydney Huber

Sally Sher

In memory of Nancy Steele

Ann and Marty Epstein

GENERAL FUND

In memory of Alice Miller Riezman

Robert D. Blitz

Howard Brodsky

Mildred and Charles Peat

Dianne and Robert Scheetz

Myrna and Jerry Sokolik

Terril & Company

Joli and Robert Wilson

Richard Wolfheim

HARVEY M. GILLERMAN MUSIC & BOOK FUND

In memory of Morton J. Singer

Marcia Gillerman

Jeanie and Donald Bassman

Margaret Gillerman and Mark Schlinkman

KAHN FOUNDATION FUND

In appreciation of Rabbi Feder's visit

Marvin Davidson

MILLARD S. COHEN CARING COMMUNITY FUND

In memory of Rozzie Schulte

Myra Cohen

RABBIS' DISCRETIONARY FUND

In memory of Hannah Cohen

Sandy and Frank Wasserman

In memory of Joel Eidelman

Rachel and David Eidelman

In memory of Sydney Huber

Rabbi Gary Huber

In memory of Barbara Mollner

Mary Jo Rosecan

In memory of Lois Schlessinger

Sandy and Frank Wasserman

In memory of N. Robert Wegusen

Ann and Ashley Loiterstein

Ellen and Ed Lieberman

Bob and Betsy Wegusen and Family

In honor of the naming of Zoe Caine

Debbie and Hal Tzinberg

In appreciation of Rabbi Shook

Lynn Wallis

In honor of the Bar Mitzvah of Alex Smoller

Kellie and Aaron Smoller

In honor of the naming of Sadie Steinbach

Patricia and Fred Steinbach

In appreciation of Temple Israel

Susan Stangler

RABBI RUBIN ENDOWED RABBINICAL CHAIR FUND

In memory of Jane Weissman Axelrod

Sanford Weissman

In memory of Ann Katzenstein

Renee and Alan Fredman and Family

THE YAHRZEIT FUND

In memory of William Bloom

Alan and Sherri Bloom

David and Sandy Bloom

Jeanne Bloom

In memory of Shmuel Bukhman

Igor Belotserkovsky

In memory of Ann Cohen

Phyllis and Stanley Cohen

In memory of Raymond S. Cohen

Phyllis and Stanley Cohen

In memory of Dorothy Cherrick

Linda Cherrick

In memory of Kathy Donald

Jeanne Bloom

In memory of Ben J. Franklin

Eroca Daniel

In memory of Rose Fred

Marvin Gelber

In memory of Albert Gelber

Marvin Gelber

In memory of Theodore Greenberg

Richard Greenberg

In memory of Sydney L. Kalina

Marcie and Dale Kalina

In memory of Ely Kopman

Charles Kopman

In memory of Phyllis Knopf Kourland

Harry Knopf

In memory of Dorothy Lending and Nathan Lending

Theresa Schwartz

In memory of Dr. Ellis Lipsitz

Judy Capes

april TRIBUTES

In memory of Stanley S. Mitleider

Sandy Baron

In memory of Laura Wolfeil Montague

Eli Montague

In memory of Thelma Mushlin

Susan and Stanley Goodman

In memory of Alfred Rich

Geri and Mel Rich

In memory of Hilda Schiffer

Lawrence A. Schiffer

In memory of Louis Schwartz

Theresa Schwartz

In memory of Lori Shelton

Marvin Goldfarb

In memory of Fay Sobel

Ruth Sobel

In memory of Carl Spector

Beverly Spector

In memory of Edith Yudkin Zweig

Rosanne and Michael Tessler

CONDOLENCES:

The congregation extends our deepest sympathy to the families of:

Alice Riezman

Nancy Steele

Edith Turkin

WHAT'S NEW AT MT. SINAI

New Mt. Sinai Cemetery will be conducting a free "Movers and Shakers" tour of the cemetery next month. The final resting places of some of the most prominent and interesting members of the St. Louis Jewish Community will be visited in a guided tour of the New Mt. Sinai Cemetery and Mausoleum, 8430 Gravois Rd. in South County on Sunday, May 22, from 1:00 to 3:00 p.m. The tour will be conducted by Esley Hamilton, preservation historian with the St. Louis County Parks and Recreation Department, and Dan Brodsky, executive director of New Mt. Sinai.

Stops on the tour will include the burial sites of personalities ranging from novelist Fannie Hurst and Solomon Sonneschein, the first rabbi of both Congregation Shaare Emeth and Temple Israel, to Civil War hero Major Adolph Proskau, and Nathan Frank, the first Jew to represent Missouri in Congress. Other stops will include the mausoleums and grave sites of such iconic local families as the Aloes-Howard Baers, Eisemans, Freunds, Edisons, Wohls, Schoenbergs-Mays, Baers-Fullers and Foxes.

Bus transportation will be available to and from the cemetery departing from the parking lots of the three Temples that own New Mt. Sinai: B'nai El, Shaare Emeth and Temple Israel. There is no charge for the tour or the bus service however, reservations are required because bus seating is limited. For reservations or more information, call the cemetery office, 314-353-2540.

WELCOME NEW ADVERTISERS

The Hitchcock Butterfield Company, E. Frederic Cohen
North Ballas Obstetrics and Gynecology, Dr. Shannon Forseter

Laura McCarthy Inc., Jill Cohen

Picture Perfect Catering, Andrew Johnson

Loop Marketing, Debbie Gold

Clayton Plastering and Tuckpointing, Julie Mohan

Julie Drier, Realtor

Mark and Nancy Kodner

Pamela Dern

Mommabeck's Cleaning Service

Dielman Sotheby Realtor, Judy Grand

Thanks to our generous advertisers, the DATELINE is produced at no cost to Temple Israel.

Please patronize our advertisers and tell them that you saw their company's ad in the DATELINE. When you patronize these businesses, it demonstrates that advertising in our newsletter is a good investment that produces a favorable return.

If you are interested in advertising your company or placing a personal greeting in the DATELINE, contact Carol Wolf Solomon at 314-432-8050 or csolomon@ti-stl.org.

ELDERLINK TO OFFER WORKSHOP SERIES

ElderLink St. Louis will offer a free workshop series, "Taking Care Of Your Parents: Heartfelt Advice From the Experts," on four consecutive Thursday evenings, April 7 - 28, from 7:00-8:30 p.m.

During this four-week series, leading elder-care experts will share their experience, wisdom, strength, and hope with senior adults and their families. In addition to older adults and their adult children, grandchildren, spouses, friends, and extended family are also invited to attend. The workshop schedule is as follows:

Thursday, April 7: Organizing the Clutter in Your Parent's Life, at Congregation B'nai Amoona.

Thursday, April 14: Secrets to Starting (and Finishing!) Tough Conversations, at the Jewish Federation Kopolow Building.

Thursday, April 21: They Just Seem Different: Understanding and Dealing with the Changing Behaviors of Elderly Parents, at United Hebrew Congregation.

Thursday, April 28: Getting Your Parents' Legal Matters in Order, at Congregation Brith Sholom Kneseth Israel.

ElderLink St. Louis is a project of the Jewish Federation of St. Louis and is administered by Jewish Family & Children's Service. The program is sponsored by the Lubin-Green Foundation, the Simons Endowment for Senior Services, and BJC Health Care.

Advance reservations are requested. To RSVP or for questions concerning this series, contact Marcia Mermelstein, 314-812-9320, or marcia@elderlinkstlouis.org.

'CHAIER' LEARNERS

To encourage congregants of all ages to engage in life-long Jewish learning, our Adult Education Committee established a special initiative called "Chai'er Learning." As part of this initiative, we annually give some *kavod* (honor) to congregants who have engaged in adult learning at the Temple during the past year. This year we will honor our "Chai'er" learners at a special Shabbat service on Friday, May 20.

At this service we will read the names of everyone who attended at least one adult education program this year. We will also give special recognition to congregants who have devoted 18 hours or more to adult Jewish study.

Listed below are the names of those who, according to our records, are on track to complete at least 18 hours of adult education this year. Record keeping mistakes can and do happen so, if you belong on this list and your name does not appear below, please let us know right away! Contact Gale in our education center, 314-432-8077 or ghilburg@ti-stl.org with any corrections.

Chai'er Learners (18 hours or more)

Evie Bernstein	Connie Levy
Burt Bromberg	Jerry Levy
George Brother	Cheryl Perlstein
Fred Cohen	Larry Perlstein
Vera Cohen	Stephanie Rhea
Steve Edison	Hildegard Rochman
Michael Freiman	Barbara Sandmel
Sarijane Freiman	Bob Schnurman
Marshall Friedman	Merle Silverstein
David Geddes	Marcia Thompson
Gale Hilburg	Eve Wilde
Mary Joftus	Ken Wilde
David Kreipke	Jeff Wilson
Martha Kreipke	Carol Winston
David Levine	Peter Winston

*we*REMEMBER

MARCH 27-APRIL 2

Gertrude Silverstein Alpert
Max Edward Arenson
Julia Sigoloff Cohen
Albert L. Colowick
Dr. Harry Cutler
Jack Dubinsky
Lory S. Fadem
Joyce Ann Conney Flaherty
Fannie Fox
Leo Frank
Hulda Arenson Freund
Emanuel Friedman
Edith Katcher Glaser
Nathan Goldberg
Pauline Silver Goldman
Nathan Goldring
Harry Goldstein
Herbert V. Goldwasser
Louis Good
Nathan Kahn
William P. Klauber
Samuel Kling
Nathan Koslow
Curt B. Levi
Jerome M. Lipkin
Yette Schapiro Lipschultz
Bernhard Littmann
Max Lubin
Evelyn Orenstein
Louis Abraham Platt
Sara Schermer Poe
Florence Rosenfeld
Rabbi Alvan D. Rubin
Lewis H. Sachs
Leo Schermer
Sophie Schorsch
Karl Schweizer
Ralph Sherberg
Julia M. Shuchart
Stephen R. Shuchart
Phillip L. Siteman
Margaret Snider
Theresa Hartmann Stillman
George Studna
Mildred Mae Talman
Elizabeth Waldman
Dr. Richard S. Weiss
G. Daniel Woolf
Florence Brown Yalem

APRIL 3-9

Ben M. Berger
Samuel T. Brown
Daniel R. Cohen
Arnold Harvey Cole
Ethel C. Dubinsky
William Engel
Joseph A. Epstein
Michael Fadem
Sara "Lassie" Zar Frager
Carol Frank
Rose Fuchs
Jack M. Gelfanbaum
Eugene M. Goldberg
Helen Levin Goldman
Gloria Mintz Goldstein
Jane Bender Goodman
Max Hene
Fred Kling
Stella Weiner Kriegshaber
Herbert Leuchter
Adolf Levi
Rosalie Levi
Mathilda Levy
Pauline Levy
Ralph Loewenstein
Sol Loewenstein
Norma Ludmerer
Audrey L. Morganstern
Kathryn Kline Nathan
Rosalind Rovak
Charles Rubenstein
Abraham Lewis Schapiro
Murray A. Schneider
Samuel Schuchat
Jack Schuman
Bernadine Silverman
Ben Spasser
Pearl Stolar
Fannie Tannenbaum
Milton E. Tucker
Alvin Bernard Waton
Morris Wax
Sabina Sher Weisman
Carolyn Corinne Wildman
Charlotte Wolff

APRIL 10-16

Harry Alschuler
Dr. Albert E. Auer
David Baron
Della B. Berger
Morton Brand
Richard I. Ferer
Max Fox
Bertha Ganz
Carl Glaser, Jr.
Sybil Goldfarb
Louis S. Goldman
Jane Freund Harris
Abe Kohane
Blanche Hamburg Komm
Jacob E. Lasky
Dr. Susan Strauss Lipschutz
Annette Neumetzger
Anna K. Newmark
Solomon Offenbach
Isadore Pass
Jacob M. Pollack
Rose Putterman
J. Ben Reichman
Dr. Samuel Rosenkranz
Leo L. Rostenberg
Fred Fuld Sale
Leah Mandel Salinger
Sidney Salinger
Mae Siegel
Ruth B. Smith
Stanley D. Victor
Jessie Weiss
Moses Mayer Weiss
Audrey S. Weissman
Alan Winnerman
Lester Wittels

APRIL 17-23

Samuel Berliner
Ralph Blumberg
Eli Cohen
Manuel Coppersmith
Eunice S. Dreyer
Ida E. Edison
Arthur A. Epstein
Eva Hiken Feld
Theresa Fremder
Virginia Freund
Audrey Glovinsky
Harry Holtzman
David Nevin Jacobson
Ralph Kalish
William Katz
Martin S. Kosberg
Janete F. Lieberman
Louis J. Losos
Mina K. Lowenstein
George W. Milius
Morris Missler
Dorothy Molasky
Nathan George Rochman
Louis J. Ross
Leo Schwab
Clifford Allan Shanfeld
Lori R. Shanfeld
Celia Siegfried
Fred Suffian
Estelle Washauer
Jacob Wasserman

APRIL 24-30

Sarah Shapiro Balk
Bessie Berger
Helen Meyer Carroll
Sidney Dennis
Irma Weil Eiseman
Elaine C. Fischman
Etta Frager
Julius Frank
Leo Frank
Adlyne Schoenstadt Freund
Mollie S. Gelb
Morris (Mosh) Glaser
Rosalie Kleinhauser Glaser
Joe R. Glassman
Goldie Goldstein
Ralph Philipson Goldsticker
Dr. David W. Helman
Jerry Kaiser
Elias Kaplan
Donald M. Kessler
Clarence A. Kohner
Joseph Kutten
Edgar Lloyd Levin
Simon Losos
Ralph Lowenbaum
Robert Nassauer
Betty Ellman Packman
Samuel Morton Prince
Louis G. Rothschild
Amy N. Sale
Minnie Kramer Schiele
Harry H. Soffer
Eli Stein
Joseph Leon Wax
Bessie Ruth Wenneker
Herman Willer
Jean Yawitz

Names listed have been placed in Perpetual Memorial. For information as to how you may place a loved one's name in Perpetual Memorial, please contact Sydney Masin at smasin@ti-stl.org.

TODAH RABAH

TO OUR FEBRUARY USHERS

Rachel Andreasson, Tyler Andreasson, The Ault Family,
Jessica Billhymer, Linda Cherrick, Andy Cohen,
Marvin Goldfarb, David Levine, Joan Moscovitz,
Jake Sandweiss, and Donna Shanfeld

TO OUR FEBRUARY B'NAI MITZVAH PRESENTER

Betty Bridge

TO OUR VOLUNTEER

Jackie Moore for driving on our Mitzvah Mania field trip.

GIVE-A-MEAL-A-MONTH

For the month of April the
Harvey Kornblum Jewish Food Pantry
is looking for these specific items in order to
provide well-balanced nourishment for the
community in need:

Canned Tuna Fish, Peanut Butter & Jelly,
Canned Pasta with Meat, Hearty Soups,
Pasta and Rice Mixes, Healthy Snacks,
Personal Care Items (shampoo, toothpaste,
soap and baby diapers - all sizes)

Items should be brought to our collection site
by the May Chapel. For further information,
please contact Louise Levine, 636- 227-1259.

ADS

ADS



TEMPLE ISRAEL DATELINE

#1 Rabbi Alvan D. Rubin Drive
Creve Coeur, MO 63141-7670
Phone: (314) 432-8050
Fax: (314) 432-8053
www.ti-stl.org

PERIODICALS
POSTAGE
PAID
AT ST. LOUIS
MISSOURI

April 2011

Adar II / Nisan 5771
Volume XXX / Number 7
www.ti-stl.org

STAFF

Amy Feder, Rabbi
Michael Alper, Rabbi
Mark L. Shook, Rabbi Emeritus
Eli K. Montague, F.T.A., Executive Director
Deborah Morosohk, R.J.E., Director of Education
Leslie Wolf, Deutsch Early Childhood Center Director
Carol Wolf Solomon, Director of Development and Communications
Judy Lewis, Director of Membership and Programming

OFFICERS

JoAnne Levy, President
Jonathan Bloom, Vice President, Membership
David Chassin, Vice President, Facilities
Pamela Dern, Vice President, Social Action
Harvey Harris, Vice President, Community Outreach
Michael Weiss, Vice President, Strategic Planning
Carol Cohen, Secretary
Dee Mogerman, Assistant Secretary
Cathy Goldsticker, Treasurer
Diana Rothbarth, Assistant Treasurer
David L. Weinstein, M.D., Immediate Past President

OFFICE HOURS

Monday - Thursday, 9:00 a.m. - 5:00 p.m.
Friday, 9:00 a.m. - 4:00 p.m.

NOTE: Temple Israel DATELINE (USPS: 128-700) is published monthly
except bi-monthly July-August by Congregation Temple Israel.
Periodicals postage paid at St. Louis, MO.

Postmaster: Send address changes to: Temple Israel DATELINE,
#1 Rabbi Alvan D. Rubin Drive, St. Louis, MO 63141-7670



DATE *line*

Wishing you and your family a happy
and healthy Passover.